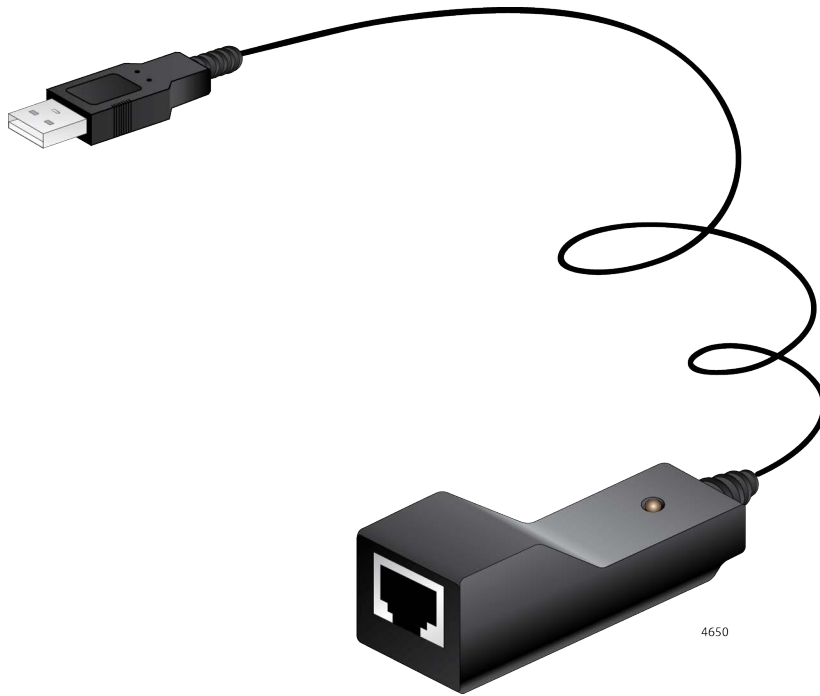


VT-Kit3

MANAGEMENT CABLE



Installation Guide

Copyright © 2025 Allied Telesis, Inc.

All rights reserved. No part of this publication may be reproduced without prior written permission from Allied Telesis, Inc.

Microsoft and Internet Explorer are registered trademarks of Microsoft Corporation. Netscape Navigator is a registered trademark of Netscape Communications Corporation. All other product names, company names, logos or other designations mentioned herein are trademarks or registered trademarks of their respective owners.

Allied Telesis, Inc. reserves the right to make changes in specifications and other information contained in this document without prior written notice. The information provided herein is subject to change without notice. In no event shall Allied Telesis, Inc. be liable for any incidental, special, indirect, or consequential damages whatsoever, including but not limited to lost profits, arising out of or related to this manual or the information contained herein, even if Allied Telesis, Inc. has been advised of, known, or should have known, the possibility of such damages.

Electrical Safety and Emissions Standards

This section contains the following:

- "Federal Communications Commission Interference Statement"
- "European Union Restriction of the Use of Certain Hazardous Substances (RoHS) in Electrical and Electronic Equipment" on page 4
- "Emissions, Immunity and Electrical Safety Standards" on page 5

This product meets the following standards:

Federal Communications Commission Interference Statement

Declaration of Conformity

Manufacturer Name: **Allied Telesis, Inc.**

Declares that the product: **VT-Kit3 Management Cable**

Model Number: **VT-Kit3**

This device complies with Part 15 of the FCC Rules. Operation is subject to the following two conditions: (1) This device may not cause harmful interference, and (2) this device must accept any interference received, including interference that may cause undesired operation.

This equipment has been tested and found to comply with the limits for a Class B digital device, pursuant to Part 15 of the FCC Rules. These limits are designed to provide reasonable protection against harmful interference in a residential installation. This equipment generates, uses and can radiate radio frequency energy and, if not installed and used in accordance with the instructions, may cause harmful interference to radio communications. However, there is no guarantee that interference will not occur in a particular installation. If this equipment does cause harmful interference to radio or television reception, which can be determined by turning the equipment off and on, the user is encouraged to try to correct the interference by one of the following measures:

- Reorient or relocate the receiving antenna.
- Increase the separation between the equipment and receiver.
- Connect the equipment into an outlet on a circuit different from that to which the receiver is connected.
- Consult the dealer or an experienced radio/TV technician for help.

Caution

FCC Caution: Any changes or modifications not expressly approved by the party responsible for compliance could void the user's authority to operate this equipment. *Ⓢ* E80



Avertissement

Avertissement de la FCC: Les changements ou modifications non expressément approuvés par la partie responsable de la conformité pourraient annuler l'autorité de l'utilisateur à utiliser cet équipement. ⚡ E80

European Union Restriction of the Use of Certain Hazardous Substances (RoHS) in Electrical and Electronic Equipment

This Allied Telesis RoHS-compliant product conforms to the European Union Restriction of the Use of Certain Hazardous Substances (RoHS) in Electrical and Electronic Equipment. Allied Telesis ensures RoHS conformance by requiring supplier Declarations of Conformity, monitoring incoming materials, and maintaining manufacturing process controls.

Emissions, Immunity and Electrical Safety Standards

EMI FCC part15 Subpart B/Class B
EN55032 Class B
AS/NZS CISPR 32 Class B
VCCI CISPR32 Class B
ICES-003 Class B
EN61000-3-2
EN61000-3-3



Warning

In a domestic environment this product may cause radio interference in which case the user may be required to take adequate measures. ⚡ E84

EMS IEC 61000-4-2
IEC 61000-4-3
IEC 61000-4-4
IEC 61000-4-5
IEC 61000-4-6
IEC 61000-4-8
IEC 61000-4-11
EN55024

Contents

Preface	11
Safety Symbols Used in this Document	12
Translated Safety Statements	13
Contacting Allied Telesis	14
Chapter 1: Introduction	15
Description	16
Features	17
Supported Operating Systems	17
LED	18
Chapter 2: Installing the Software Driver	19
Overview	20
Downloading the Driver Software from the Allied Telesis Website	21
Installing the Software Driver for the VT-Kit3 Management Cable	23
Confirming the Installation of the Software Driver	28
Unlocking the VT-Kit3 Windows Setup File	30
Verifying Your Account Status	32
Chapter 3: Installing the Hardware	33
Reviewing Safety Precautions	34
Unpacking the Shipping Box	35
Connecting the VT-Kit3 Management Cable	36
Chapter 4: Uninstalling the Driver Software	39
Overview	40
Guidelines	40
Uninstalling the Driver Software	41
Confirming the Driver Software is Uninstalled	43
Appendix A: Specifications	45
Physical Specifications	45
Environmental Specifications	45
RJ-45 Twisted Pair connector	46

Figures

Figure 1: Resources on the Allied Telesis Corporate Website	14
Figure 2: VT-Kit3 Management Cable	16
Figure 3: Example of a Local Management Session on the Console Port with the VT-Kit3 Management Cable.....	16
Figure 4: LED on the VT-Kit3 Management Cable	18
Figure 5: Software Downloads Page	21
Figure 6: Drivers for the VT-Kit3 Management Cable Page	22
Figure 7: VT-Kit3 Driver Icon	23
Figure 8: Choose Setup Language Window	24
Figure 9: Driver Installation Welcome Window	24
Figure 10: Ready to Install the Program Window	25
Figure 11: Setup Status Window	26
Figure 12: Finished Driver Installation Window	26
Figure 13: Selecting Device Manager from the Start Menu.....	28
Figure 14: Device Manager	29
Figure 15: Icon Menu.....	30
Figure 16: VT-Kit3_Windows_Setup Properties Window	31
Figure 17: Shipping Box Contents.....	35
Figure 18: Example of the VT-Kit3 Cable	36
Figure 19: Select a Program.....	41
Figure 20: Device Uninstall Confirmation	42
Figure 21: Device Uninstall Complete	42
Figure 22: Device Manager	43
Figure 23: RJ-45 Connector and Receptor Pin Layout.....	46

Preface

This manual contains the installation instructions for the VT-Kit3 Management Cable. The Preface contains the following sections:

- “Safety Symbols Used in this Document” on page 12
- “Translated Safety Statements” on page 13
- “Contacting Allied Telesis” on page 14

Safety Symbols Used in this Document

This document uses the following conventions:

Note

Notes provide additional information.



Caution


Cautions inform you that performing or omitting a specific action may result in equipment damage or loss of data.



Warning

Warnings inform you that performing or omitting a specific action may result in bodily injury.


Translated Safety Statements

Important: The  symbol indicates that translations of the safety statement are available in the PDF document **Translated Safety Statements** posted on the Allied Telesis website at alliedtelesis.com/library/search.

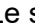
- Übersetzte Sicherheitserklärungen

Wichtig: Das  zeigt an, dass Übersetzungen der Sicherheitserklärung in den PDF-**Translated Safety Statements** auf der Allied Telesis-Website unter alliedtelesis.com/us/en/library/search verfügbar sind.


- Declaraciones de seguridad traducidas

Importante: El  indica que las traducciones de la declaración de seguridad están disponibles en las **Translated Safety Statements** en PDF publicadas en el sitio web de Allied Telesis en alliedtelesis.com/us/en/library/search.


- Consignes de sécurité traduites

Important: Le symbole  indique que les traductions de la déclaration de sécurité sont disponibles dans le PDF **Translated Safety Statements** publiées sur le site Web de Allied Telesis à l'adresse alliedtelesis.com/us/en/library/search.

- Dichiarazioni di sicurezza tradotte

Importante:  indica che le traduzioni della dichiarazione di sicurezza sono disponibili nelle **Translated Safety Statements** in PDF pubblicate sul sito Web di Allied Telesis all'indirizzo alliedtelesis.com/us/en/library/search.

- Översatta säkerhetsförklaringar

Viktig:  anger att översättningar av säkerhetsförklaringen finns tillgängliga i PDF-dokumentet **Translated Safety Statements** som publicerats på Allied Telesis webbplats på alliedtelesis.com/us/en/library/search.

Contacting Allied Telesis

The front page of the Allied Telesis corporate website at www.alliedtelesis.com contains links to product information, technical support, available support services, and contact information. Refer to Figure 1

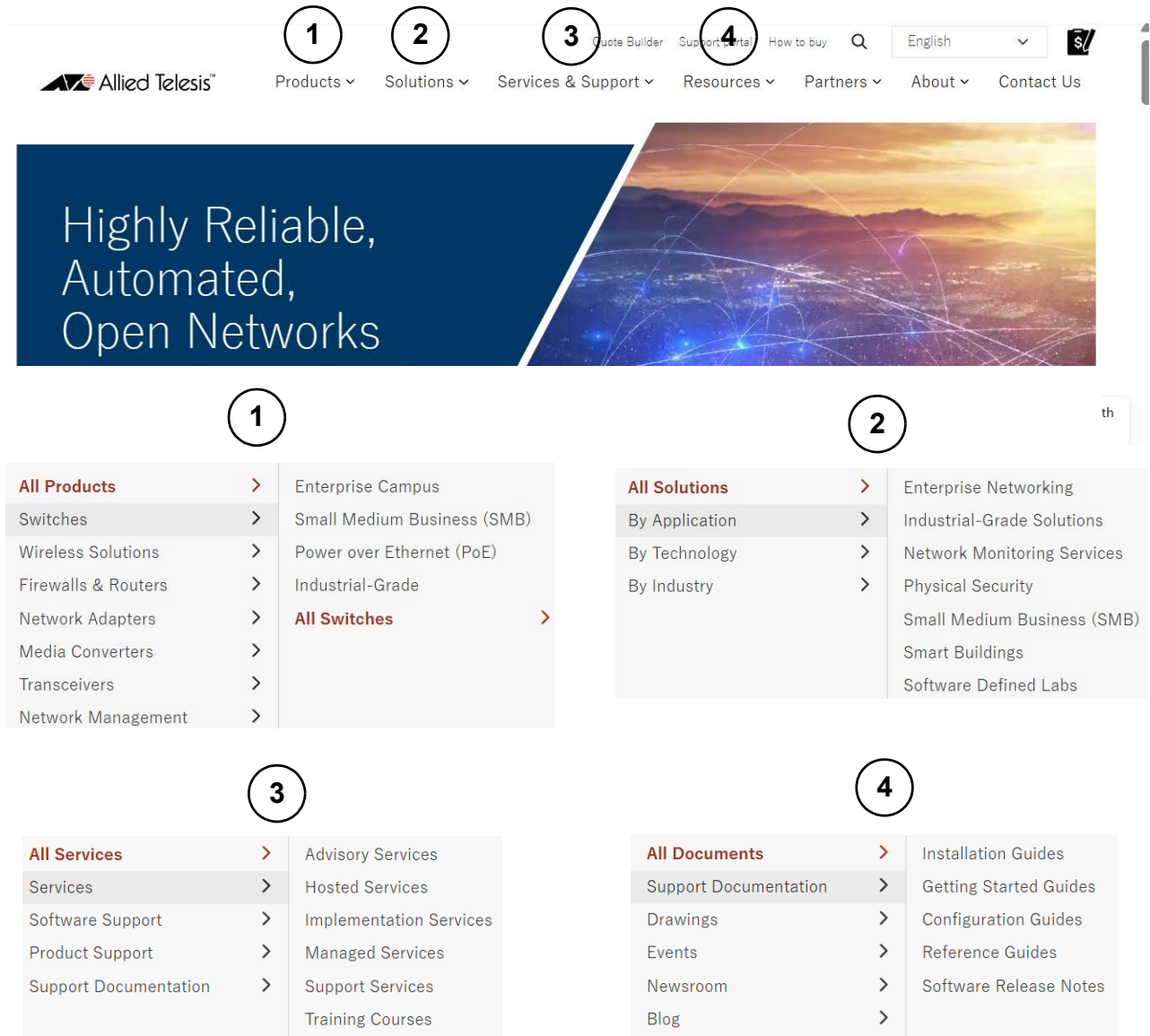


Figure 1. Resources on the Allied Telesis Corporate Website

Chapter 1

Introduction

This chapter describes the VT-Kit3 management cable in the following sections:

- ❑ “Description” on page 16
- ❑ “LED” on page 18

Description

The VT-Kit3 management cable, illustrated in Figure 1, is a USB-to-Serial converter with two connectors:

- ❑ One USB-A male connector
- ❑ One RJ-45 female receptor

The VT-Kit3 management cable is powered via the USB connection and is compatible with the USB 2.0 standard.

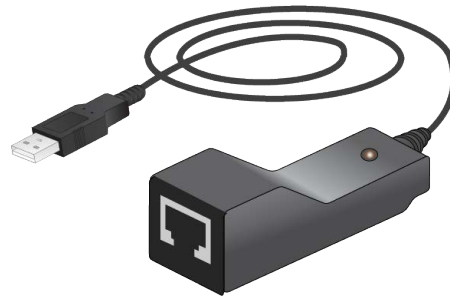


Figure 1. VT-Kit3 Management Cable

The VT-Kit3 management cable is used to conduct local management sessions on Allied Telesis network products, such as Ethernet switches and routers. The cable connects a laptop/desktop computer with the Console port on the managed device. Refer to Figure 2.

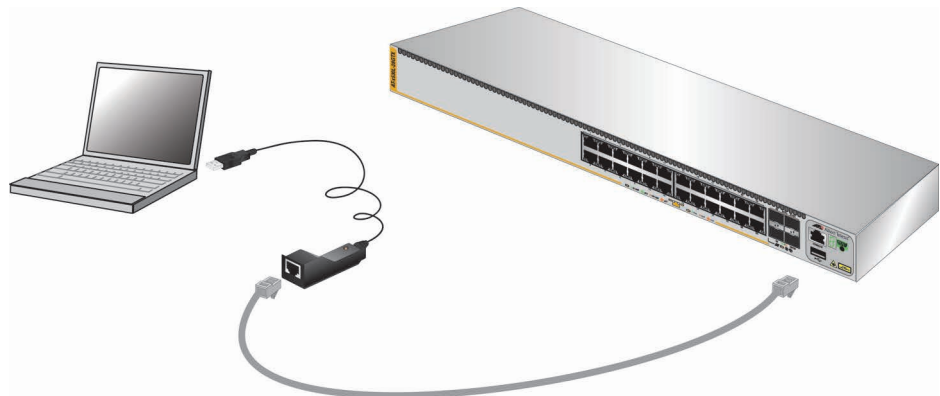


Figure 2. Example of a Local Management Session on the Console Port with the VT-Kit3 Management Cable

The VT-Kit3 management cable comes with a software driver for the Windows operating system. Refer to Chapter 2, “Installing the Software Driver” on page 19 for installation instructions.

Features Here is a list of the VT-Kit3 management cable features:

- Converts from a USB port to a RJ-45 console port (RS232)
- Support straight-through RJ-45 cable
- Plug-and-Play, small and lightweight
- Up to 115.2Kbps data rate
- USB2.0 compliant

Supported Operating Systems The VT-Kit3 management cable supports the following operating systems:

- Windows 8.1
- Windows 10
- Windows 11

LED

The VT-Kit3 management cable has one LED on the RJ-45 connector. Refer to Figure 3.



Figure 3. LED on the VT-Kit3 Management Cable

Table 1 describes the states of the LED.

Table 1. Descriptions of the LED States on the VT-Kit3 Management Cable

State	Description
Solid Orange	The VT-Kit3 management cable is powered on and running normally.
Off	The VT-Kit3 management cable is powered off.

Chapter 2

Installing the Software Driver

This chapter contains the instructions for installing the software driver for the VT-Kit3 management cable on your workstation. The sections are listed here:

- ❑ “Overview” on page 20
- ❑ “Downloading the Driver Software from the Allied Telesis Website” on page 21
- ❑ “Installing the Software Driver for the VT-Kit3 Management Cable” on page 23
- ❑ “Confirming the Installation of the Software Driver” on page 28
- ❑ “Unblocking the VT-Kit3 Windows Setup File” on page 30
- ❑ “Verifying Your Account Status” on page 32

Overview

There are two versions of the VT-Kit3 management cable:

- ❑ VT-Kit3 management cable, revision A
- ❑ VT-Kit3 management cable, revision B

There is one software driver:

- ❑ VT-Kit3_Windows_Setup_v1.0.066

The driver is available for download from the Allied Telesis website. It is compatible with both revisions A and B of the management cable.

Downloading the Driver Software from the Allied Telesis Website

This section contains the procedure for downloading the ZIP file with the software driver for the VT-Kit3 management cable from the Allied Telesis website.

Note

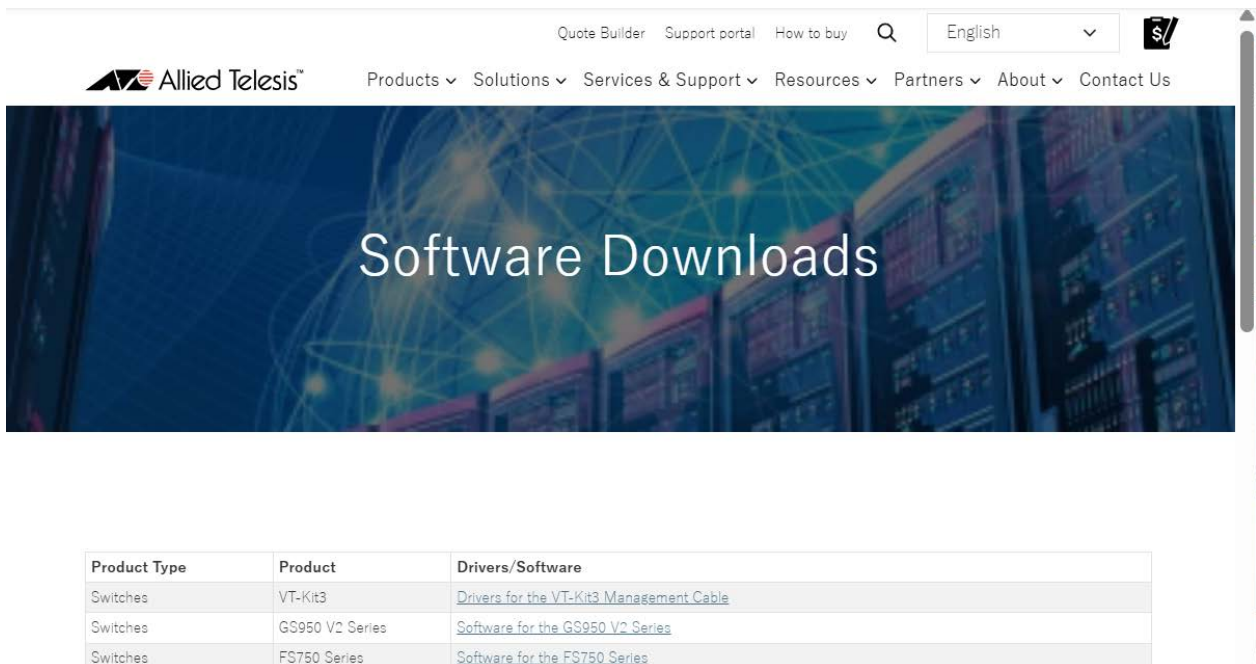
Internet access by your computer is required for this procedure.

To download the software driver from the Allied Telesis website, perform the following procedure:

1. Start your Windows operating system and log in.
2. Open a web browser, such as Internet Explorer or FireFox.
3. Enter the following address in the URL field in the web browser:

<http://www.alliedtelesis.com/support/software>

The Software Downloads page is displayed. See Figure 4.



Product Type	Product	Drivers/Software
Switches	VT-Kit3	Drivers for the VT-Kit3 Management Cable
Switches	GS950 V2 Series	Software for the GS950 V2 Series
Switches	FS750 Series	Software for the FS750 Series

Figure 4. Software Downloads Page

4. Click this VT-Kit3 link under the Drivers/Software column in the page:

[Drivers for the VT-Kit3 Management Cable](#)

The Drivers for the VT-Kit3 Management Cable page is shown in Figure 5.

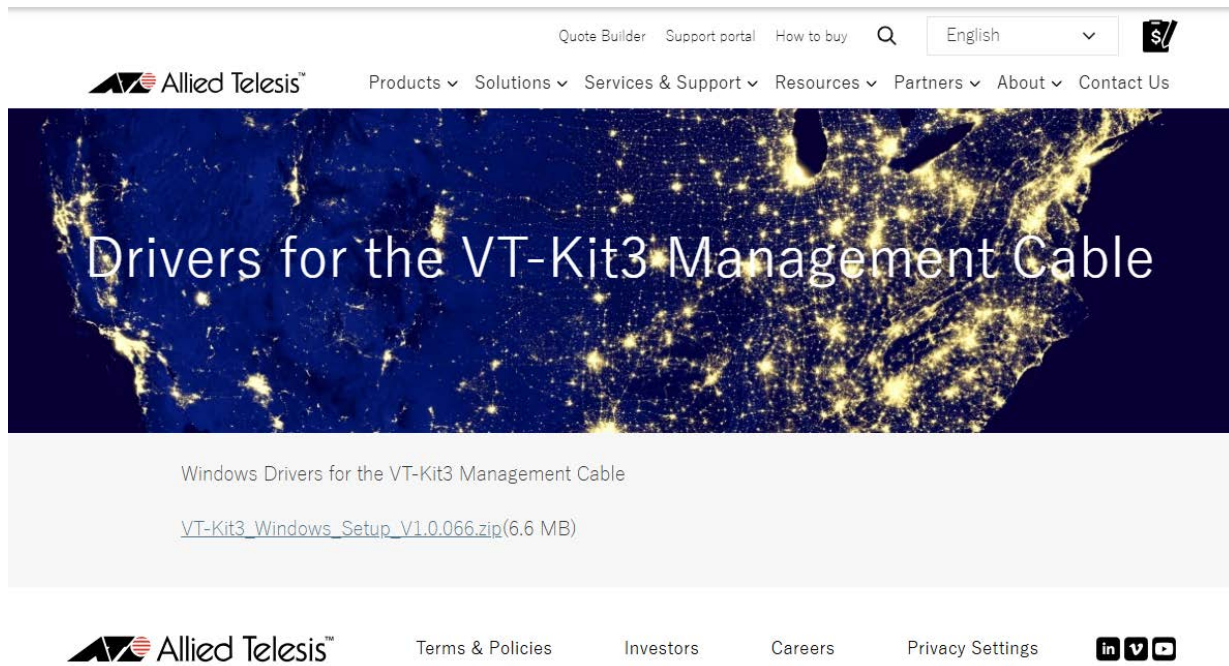


Figure 5. Drivers for the VT-Kit3 Management Cable Page

5. Click this link in the page:

VT-Kit3 Windows Setup V1.0.066.zip

The ZIP file with the VT-Kit3 cable driver is automatically saved in the Download folder on your computer.

6. If desired, move the VT-Kit3 ZIP file to another folder on your computer.
7. Double-click the ZIP file to open it.
8. Extract the VT-Kit3_Windows_Setup application file from the ZIP file and store it in a folder on your computer.
9. Go to “Installing the Software Driver for the VT-Kit3 Management Cable” on page 23 to add the software driver for the VT-Kit3 management cable to your computer.

Installing the Software Driver for the VT-Kit3 Management Cable

This section contains the procedure for installing the software driver for the VT-Kit3 management cable on your management workstation. This procedure assumes that you have already downloaded the software driver onto your computer and extracted it from the ZIP file. For instructions, refer to “Downloading the Driver Software from the Allied Telesis Website” on page 21.

Note

Installing the software driver requires Administrator privileges on your computer. To determine your account status, refer to “Verifying Your Account Status” on page 32.

Note

The following procedure applies to all supported Windows systems, including Windows 8.1, Windows 10, and Windows 11.

Note

This procedure recommends rebooting your workstation after installing the driver.

To install the software driver for the VT-Kit3 management cable on your workstation, perform the following procedure:

1. Start your Windows operating system and log in.
2. Close all application programs.
3. Double-click on the VT-Kit3 driver icon to begin the installation procedure. Refer to Figure 6.

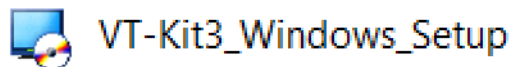


Figure 6. VT-Kit3 Driver Icon

Note

If the file fails to launch, it may be blocked. To unblock it, refer to “Unblocking the VT-Kit3 Windows Setup File” on page 30.

The program displays a window with the following prompt:

Do you want to allow this app from an unknown publisher to make changes to your device?

4. Click **Yes** to continue or **No** to cancel the installation.

If you select to continue, the installation program displays the Choose Setup Language window in Figure 7.

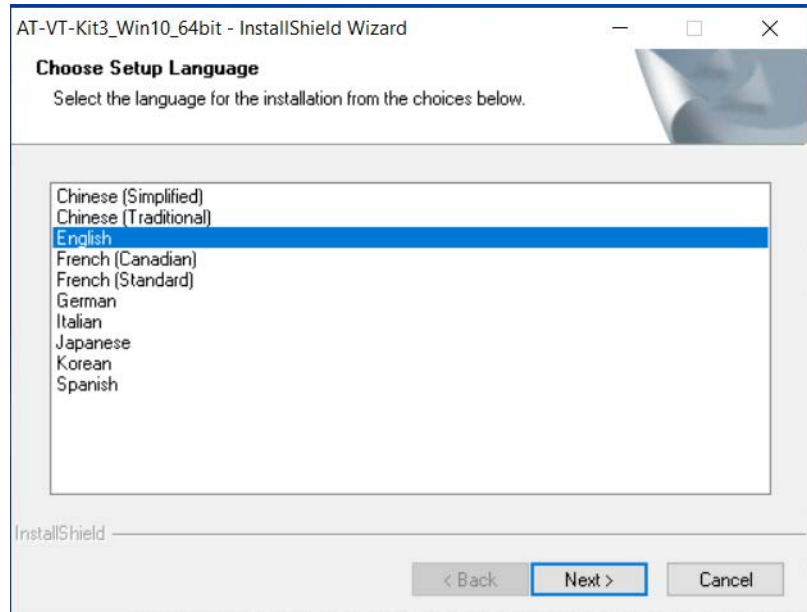


Figure 7. Choose Setup Language Window

5. Select your language from the list and click **Next** to continue with the driver installation or **Cancel** to cancel the installation.

The driver installation program displays the Welcome window in Figure 8.

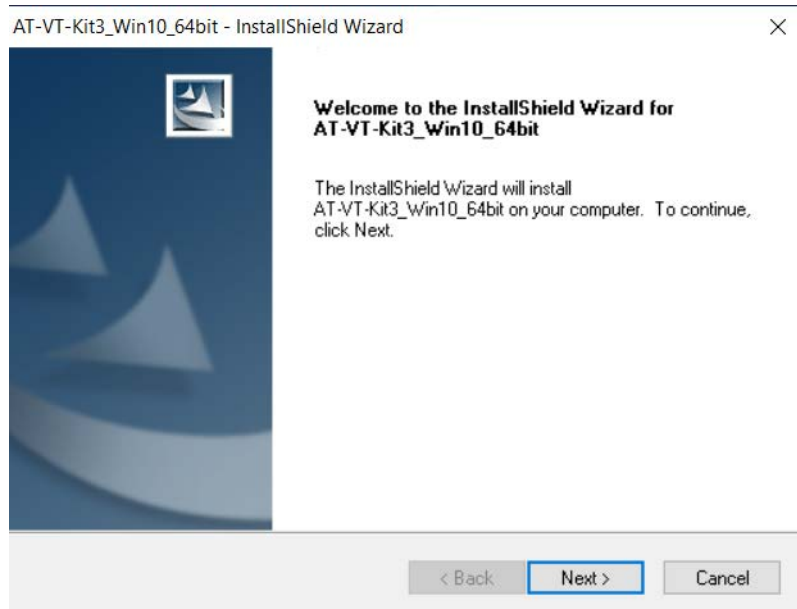


Figure 8. Driver Installation Welcome Window

6. Click **Next** to continue with the driver installation or **Cancel** to cancel the installation.

If you click Next, the program displays the Ready to Install the Program window in Figure 9.

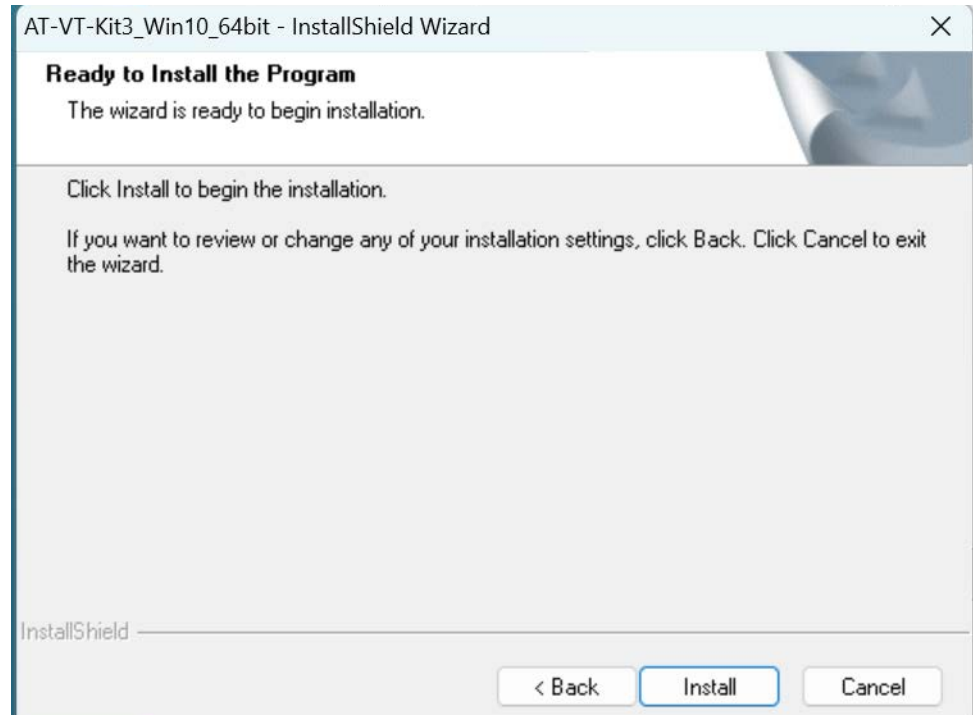


Figure 9. Ready to Install the Program Window

7. Click **Install** to install the software driver or **Cancel** to cancel the installation.

If you click Install, the program display the Setup Status window in Figure 10 on page 26 as it installs the software driver. The installation should take only a few moments.

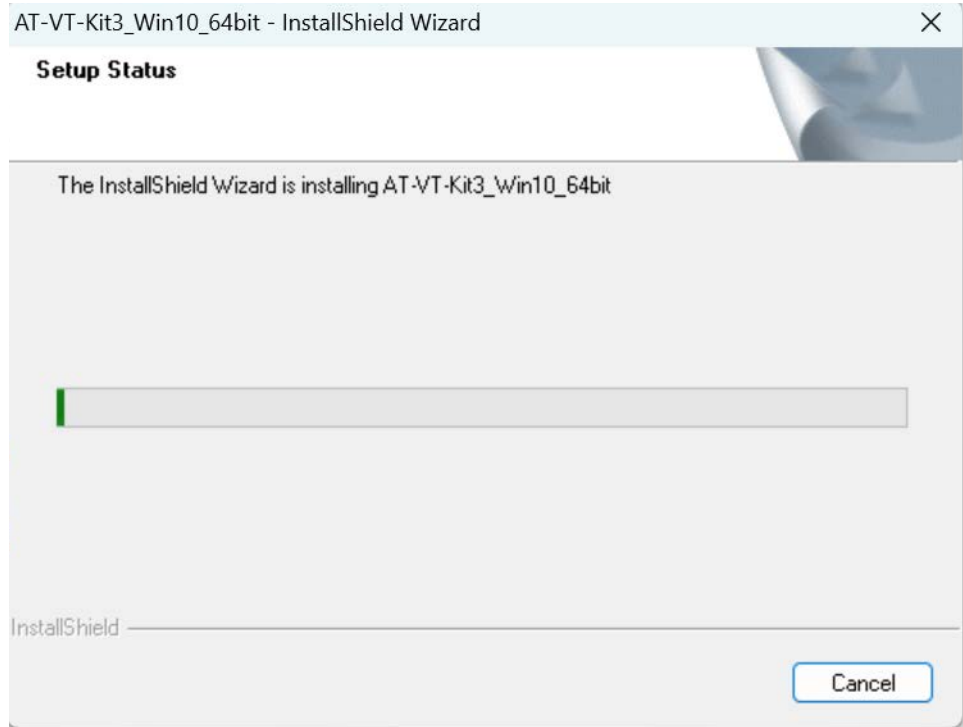


Figure 10. Setup Status Window

The program displays the window in Figure 11 after installing the software driver.

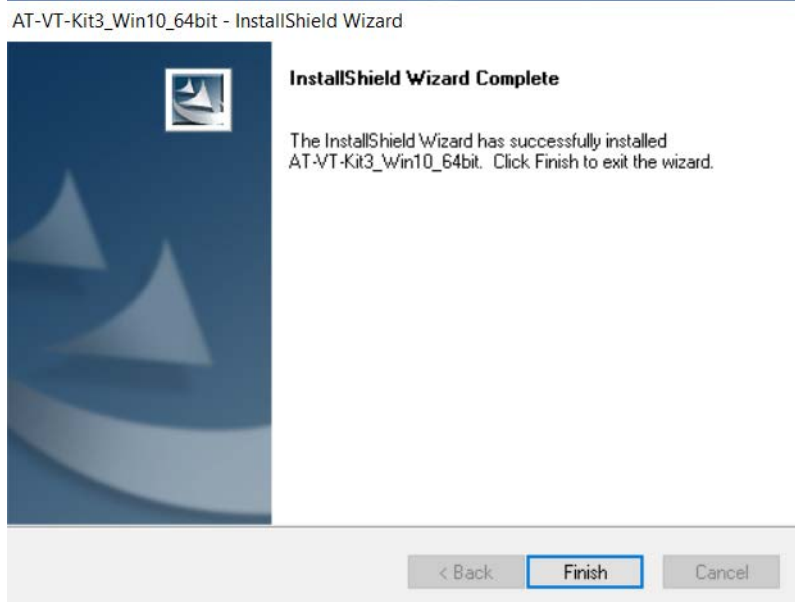


Figure 11. Finished Driver Installation Window

8. Click **Finish**.
9. Reboot your workstation.
10. Log in again.
11. Go to “Confirming the Installation of the Software Driver” on page 28.

Confirming the Installation of the Software Driver

To confirm that your computer successfully installed the software driver, perform the following procedure:

Note

The following procedure is based on Windows 11. The procedure for your workstation may be different, depending on its operating system.

1. Start your Windows operating system and log in.
2. Connect the VT-Kit3 management cable to a USB port on your workstation.
3. Right-click on the Start Menu and select **Device Manager**.



Figure 12. Selecting Device Manager from the Start Menu

The Device Manager window is shown in Figure 13.

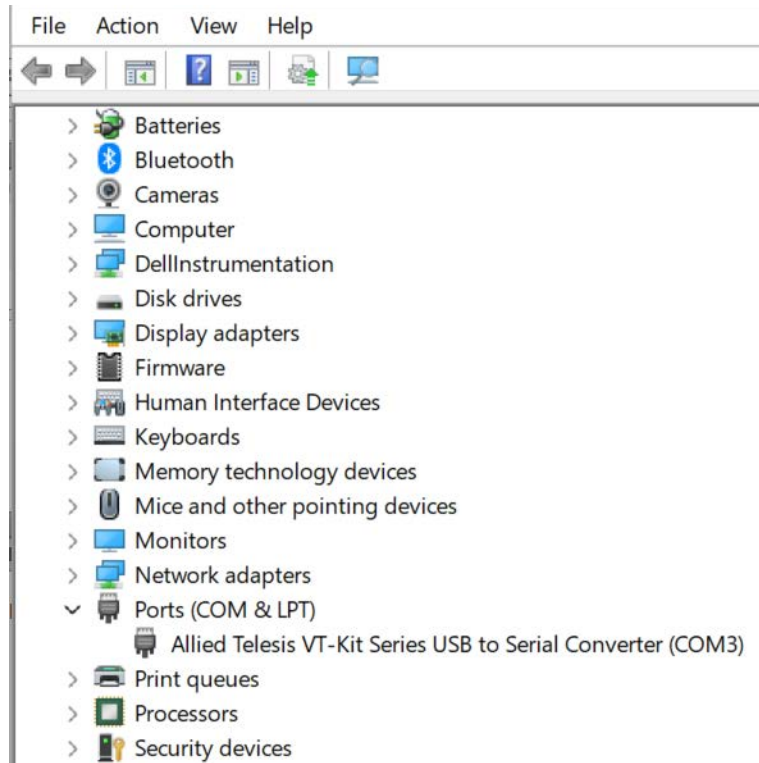


Figure 13. Device Manager

4. Verify that the Ports (COM & LPT) selection in the window includes the “Allied Telesis VT-Kit Series USB to Serial Converter (COM *n*)” option.

This completes the driver installation procedure for the VT-Kit3 management cable. To start a management session on an Allied Telesis managed product, refer to the product’s Installation Guide on the Allied Telesis website.

Unblocking the VT-Kit3 Windows Setup File

If the VT-Kit3 Windows Setup file fails to launch when you double-click it to start the driver installation, the file may be blocked. To unblock it, perform the following procedure:

1. Place the mouse over the file icon and right-click to display the icon menu. Refer to Figure 14.

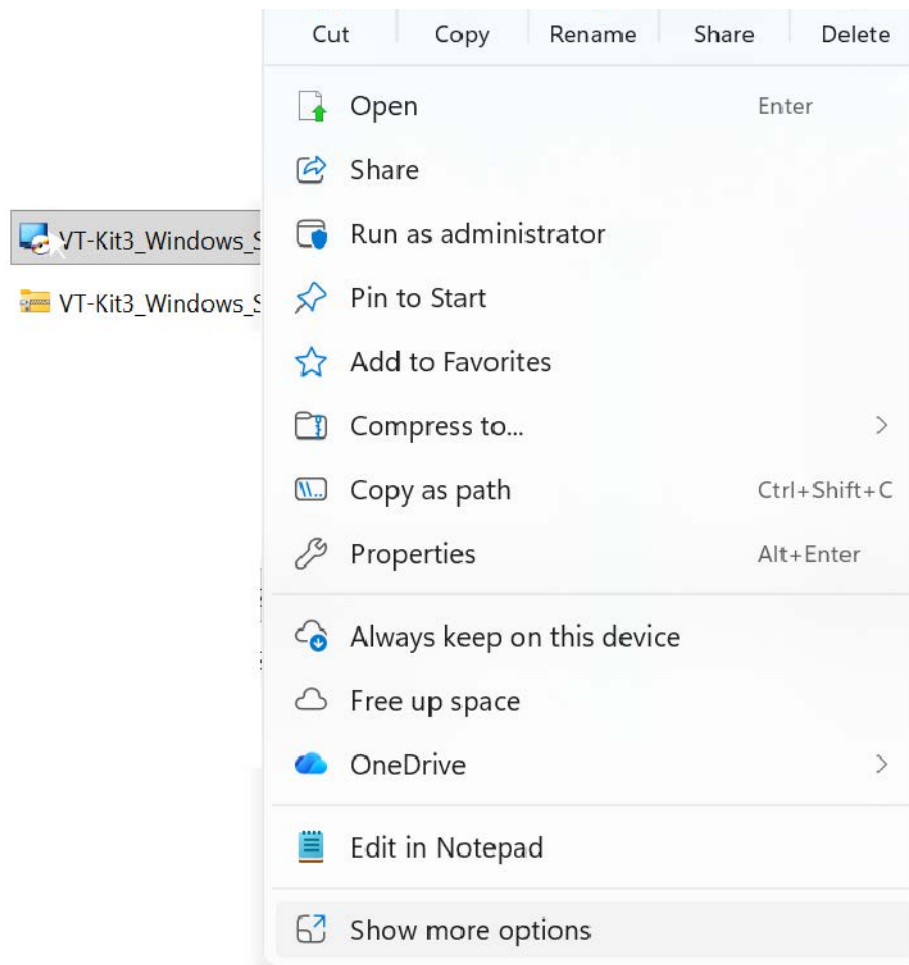


Figure 14. Icon Menu

2. Select **Properties** from the menu to display the VT-Kit3_Windows_Setup Properties window. Refer to Figure 15 on page 31.

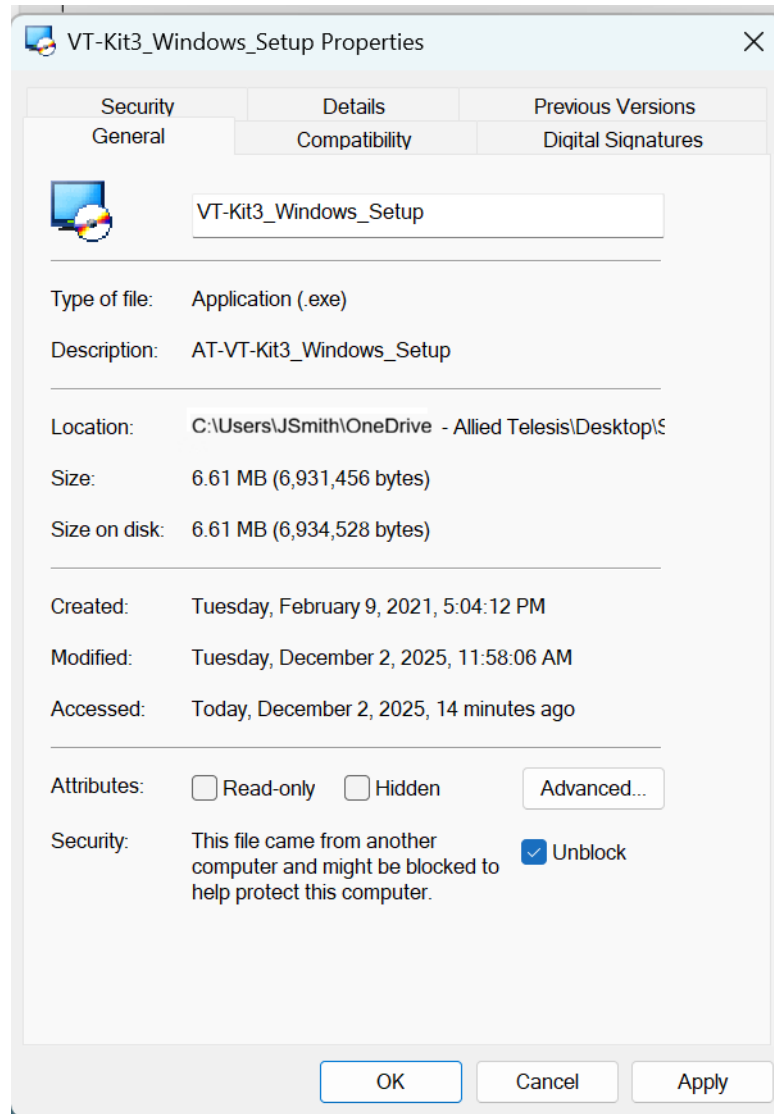


Figure 15. VT-Kit3_Windows_Setup Properties Window

3. Click the Security **Unblock** dialog box at the bottom of the window to add a checkmark. This unblocks the file.

Note

If the Security selection is missing in the window, the file is already unblocked.

4. Click the **OK** button.
5. Return to “Installing the Software Driver for the VT-Kit3 Management Cable” on page 23.

Verifying Your Account Status

Installing the software driver on your computer requires Administrator status. If you are uncertain as to your account status, perform the following procedure to display it on a Windows Pro 11 system. The procedure for a computer with a different OS might be different.

1. Right-click in the work area of the screen to display the system menu.
2. Select **Personalize**.
3. From the menu in the Personalization window, select **Accounts**.

Your account status is displayed at the top of the Accounts window. A status of Administrator is required to install the software driver.

Chapter 3

Installing the Hardware

This chapter contains the following sections:

- “Reviewing Safety Precautions” on page 34
- “Unpacking the Shipping Box” on page 35
- “Connecting the VT-Kit3 Management Cable” on page 36

Reviewing Safety Precautions

Review the following safety precautions before using the VT-Kit3 management cable.

Note

Refer to “Translated Safety Statements” on page 13 for the web address of foreign language translations of the safety statements.



Warning

Do not work on this equipment or cables during periods of lightning activity. ⚡ E2



Warning

Power cord is used as a disconnection device. To de-energize equipment, disconnect the power cord. ⚡ E3



Warning

Operating Temperature: This product is designed for a maximum ambient temperature of 40 degrees C. ⚡ E7

Note

All Countries: Install products in accordance with local and National Electrical Codes. ⚡ E8



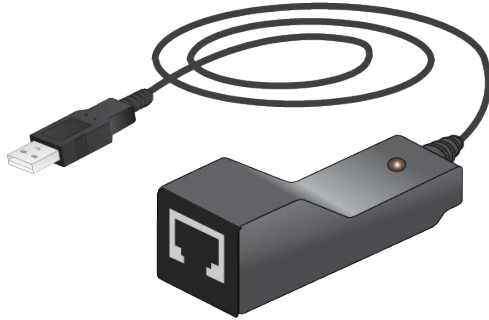
Caution

The unit does not contain serviceable components. Please return damaged units for servicing. ⚡ E42

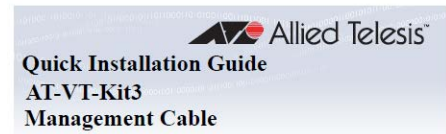
Unpacking the Shipping Box

Figure 16 lists the items in the shipping box.

VT-Kit3 Management Cable



AT-VT-Kit3 Management Cable
Installation Guide



Introduction

This document contains an abbreviated version of the AT-VT-Kit3 Management Cable Installation Guide. For the complete installation instructions including the safety statements, see the AT-VT-Kit3 Management Cable Installation Guide on the Allied Telesis web site at www.alliedtelesis.com.

AT-VT-Kit3 Management Cable

The AT-VT-Kit3 management cable is a USB-to-Serial converter with a USB-A male connector on the one end and an RJ-45 female receptor on the other end. This product is designed to connect a laptop/desktop computer and a network device, such as a switch or router.

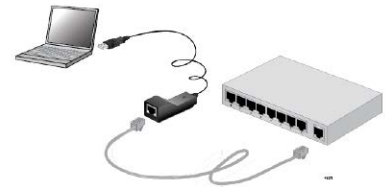


Figure 16. Shipping Box Contents

Connecting the VT-Kit3 Management Cable

The VT-Kit3 management cable is designed to connect a USB port on a laptop/desktop computer to a Console port on a managed Allied Telesis network device. See Figure 17 as an example.

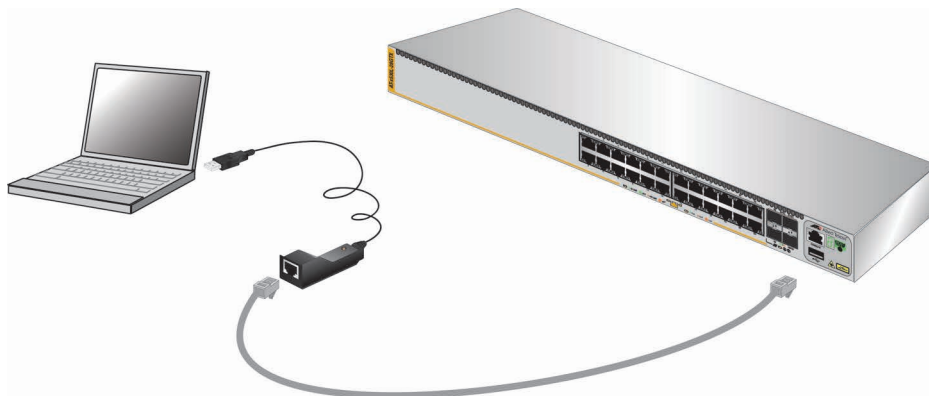


Figure 17. Example of the VT-Kit3 Cable

Note

The following procedure assumes you have already installed the software driver for the cable onto your management workstation. For instructions, refer to Chapter 2, “Installing the Software Driver” on page 19.

To connect the VT-Kit3 management cable to your management computer and start a local management session, perform the following procedure:

4. Review “Reviewing Safety Precautions” on page 34.
5. Unpack the shipping box.
6. Check the VT-Kit3 management cable for visible signs of damage.
7. Connect the USB connector of the VT-Kit3 management cable to a USB port your laptop/desktop computer.
8. Connect the RJ-45 connector of the VT-Kit3 management cable to the Console port on an Allied Telesis network device with a straight-through Ethernet network cable.
9. If the switch or router is powered off, power it and wait several minutes for it to initialize the AlliedWare Plus management software.

10. Configure your VT-100 terminal or terminal emulation program as follows:

- Baud rate: 9600 bps (The baud rate of the Console port is adjustable from 1200 to 115200 bps. The default is 9600 bps.)
- Data bits: 8
- Parity: None
- Stop bits: 1
- Flow control: None

Note

The port settings are for a DEC VT100 or ANSI terminal, or an equivalent terminal emulator program.

11. Press Enter. You are prompted for the name and password of the manager account on the Allied Telesis network device.

12. Enter the name and password. The default AlliedWare Plus values are “manager” and “friend” (without the quotes), respectively.

Note

User names and passwords are case sensitive.

The switch starts the local management session and displays the following prompt:

```
awp1us>
```

The prompt is the User Exec mode in the AlliedWare Plus command line interface. This completes the procedure for installing the VT-Kit3 management cable.

Chapter 4

Uninstalling the Driver Software

This chapter describes how to uninstall the software driver for the VT-Kit3 management cable from your management workstation. This chapter contains the following topics:

- ❑ “Overview” on page 40
- ❑ “Uninstalling the Driver Software” on page 41
- ❑ “Confirming the Driver Software is Uninstalled” on page 43

Overview

If you stop using the VT-Kit3 management cable with your computer, you may want to uninstall the driver software from its operating system.

Guidelines

Here are the guidelines for uninstalling the driver software from your system:

- ❑ You must have Administrator privileges to remove the driver software.
- ❑ You *cannot* uninstall the VT-Kit3 driver software using Device Manager on your Windows system. You must use an executable file to uninstall the driver software.
- ❑ You cannot have two versions of the software driver for the VT-Kit3 management cable installed on your system at the same time. If your computer already has a different version of the software driver, you must uninstall it before installing a newer version.

Uninstalling the Driver Software

To uninstall the driver software from your operating system, do the following:

1. Start your Windows operating system and log in.
2. Locate the driver software executable file.

If you do not have the file on your system, download one from the ATI website.

Note

To obtain the driver software, see “Downloading the Driver Software from the Allied Telesis Website” on page 21.

3. Double-click the executable icon.

The Security Warning windows appears.

4. Click **Yes**.

InstallShield Wizard displays the window in Figure 18.

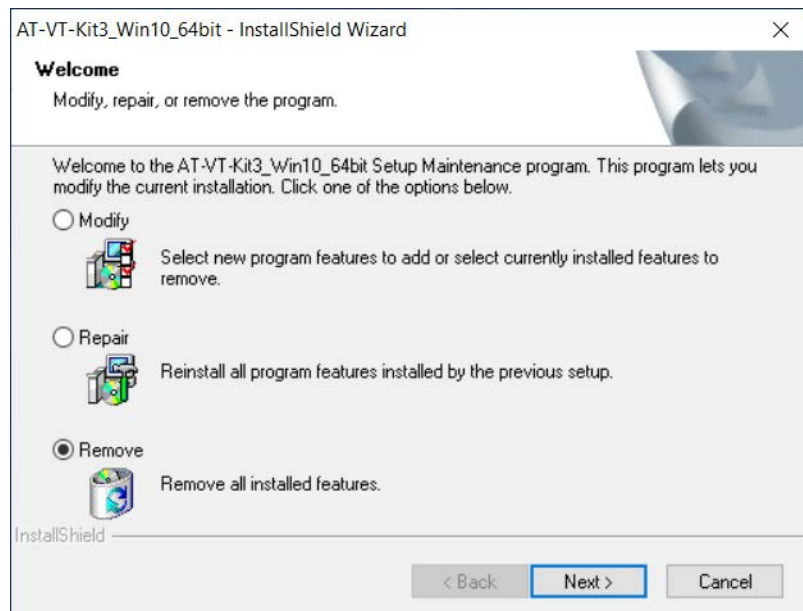


Figure 18. Select a Program

5. Select **Remove** and click **Next**.

The Uninstall Confirmation window in Figure 19 is displayed.

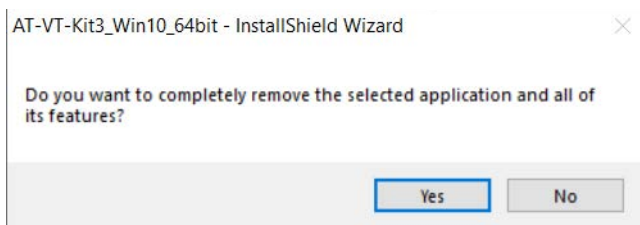


Figure 19. Device Uninstall Confirmation

6. Click **Yes**.

The Uninstall Complete window appears as shown in Figure 20.

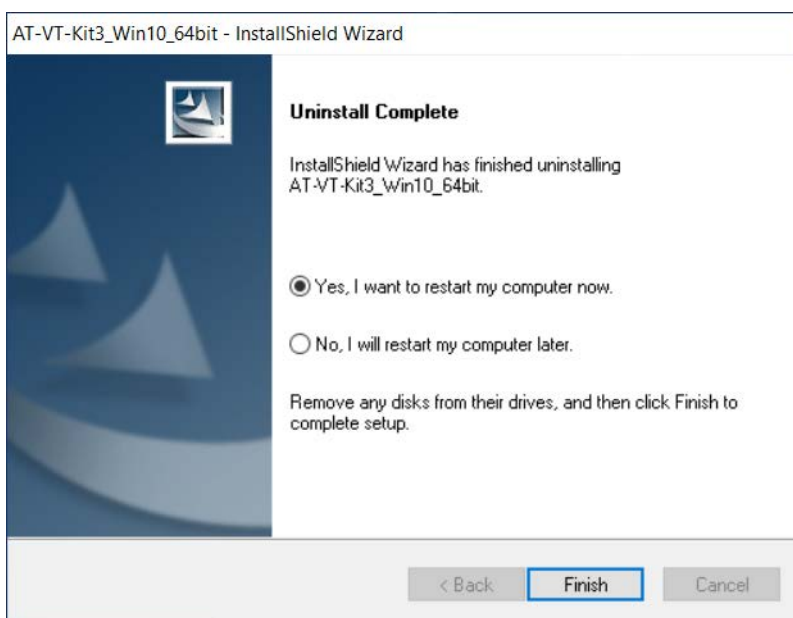


Figure 20. Device Uninstall Complete

7. Click **Finish**.

Confirming the Driver Software is Uninstalled

To confirm if the driver software is successfully uninstalled, do the following:

1. Start your Windows operating system and log in.
2. Open Device Manager in Control Panel. See Figure 21.

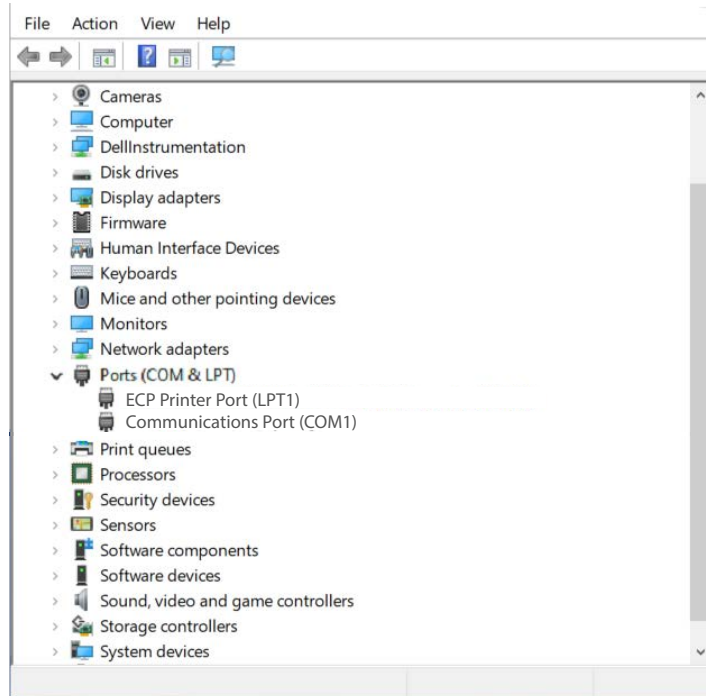


Figure 21. Device Manager

3. Confirm that “Allied Telesis VT-Kit Series USB to Serial Converter (COM *n*)” is no longer included under Ports (COM & LPT).

Appendix A

Specifications

Physical Specifications

Dimensions (L x W x H):	26 mm X 58 mm X 22 mm (1.0 in. x 2.3 in. x 0.9 in.)
Weight:	60 g (2.1 oz)
Cable length:	1.2 m (47.2 in.)

Environmental Specifications

Operating Temperature:	0°C to 40°C (32°F to 104°F)
Storage Temperature:	-20°C to 60°C (-4°F to 140°F)
Operating Humidity:	5% to 85% (non-condensing)
Storage Humidity:	5% to 85% (non-condensing)

RJ-45 Twisted Pair connector

This section lists the RJ-45 connector pinouts for the VT-Kit3 management cable.

Figure 22 illustrates the physical pin layouts of the RJ-45 connector and receptor.

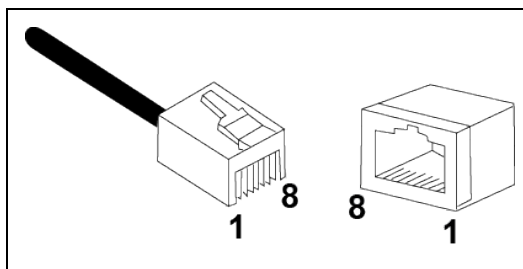


Figure 22. RJ-45 Connector and Receptor Pin Layout

Table 2 lists the pin signals at the RJ-45 connector.

Table 2. Pin Signals

Pin Number	Console RJ-45 Type1	Console RJ-45 Type2	RJ-45
1	RTS	RTS	CTS
2	DTR	Not in Use	DSR
3	TxD	TxD	RxD
4	GND	GND	GND
5	GND	GND	GND
6	RxD	RxD	TxD
7	DSR	Not in Use	DTR
8	CTS	CTS	RTS