

Vista Manager EX Version 3.16.x

3.16.0
3.16.3
3.16.4

Acknowledgments

©2026 Allied Telesis Inc. All rights reserved. No part of this publication may be reproduced without prior written permission from Allied Telesis, Inc.

Allied Telesis, Inc. reserves the right to make changes in specifications and other information contained in this document without prior written notice. The information provided herein is subject to change without notice. In no event shall Allied Telesis, Inc. be liable for any incidental, special, indirect, or consequential damages whatsoever, including but not limited to lost profits, arising out of or related to this manual or the information contained herein, even if Allied Telesis, Inc. has been advised of, known, or should have known, the possibility of such damages.

Allied Telesis, AlliedWare Plus, Allied Telesis Management Framework, EPSRing, SwitchBlade, VCStack and VCStack Plus are trademarks or registered trademarks in the United States and elsewhere of Allied Telesis, Inc. Adobe, Acrobat, and Reader are either registered trademarks or trademarks of Adobe Systems Incorporated in the United States and/or other countries. Additional brands, names and products mentioned herein may be trademarks of their respective companies.

Getting the most from this Release Note

To get the best from this release note, we recommend using Adobe Acrobat Reader version 8 or later. You can download Acrobat free from www.adobe.com/

Content

What's New in Vista Manager EX v3.16.0	4
What's New in Vista Manager EX v3.16.3	16
What's New in Vista Manager EX v3.16.4	18
Important Considerations Before Upgrading	20
Obtaining User Documentation	21
Upgrading Vista Manager as a Windows-based installation	22
Upgrading Vista Manager on VST-APL	34
Upgrading Vista Manager on VST-VRT	34
Troubleshooting	34

What's New in Vista Manager EX v3.16.0

Introduction

This release note describes the new features in Vista Manager EX™ v3.16.0. It covers changes to Vista Manager EX plus the optional Autonomous Wave Controller (AWC) plugin.

Further information is included for other supported plugins, and AMF Plus supported menu items, highlighted with a badge in the Vista Manager EX UI.

You can obtain the software files from the [Software Download area of the Allied Telesis website](#). Log in using your assigned email address and password.

Contact your authorized Allied Telesis support center to obtain licenses.

Caution: Information in this release note is subject to change without notice and does not represent a commitment on the part of Allied Telesis, Inc.



While every effort has been made to ensure that the information contained within this document and the features and changes described are accurate, Allied Telesis, Inc. can not accept any type of liability for errors in, or omissions arising from, the use of this information.

New Features and Enhancements

This section summarizes the new features and enhancements added to Vista Manager EX version 3.16.0.

It includes:

- [“Last update to Windows version of Vista Manager EX” on page 5.](#)
- [“New device icons” on page 5.](#)
- [“Custom Device GUI support from Network map” on page 6.](#)
- [“Network map client counter” on page 7.](#)
- [“Ability to hide event logs” on page 8.](#)
- [“Viewing protocol traffic from all links with sFlow” on page 9.](#)
- [“Endpoints table alarm filtering removed” on page 9.](#)
- [“AWC enhancements” on page 10.](#)

Last update to Windows version of Vista Manager EX

From version 3.17.0 onwards, we will no longer support the Windows version of Vista Manager EX.

To get ongoing new features and enhancements, you need to update your Vista Manager installation to the VST-VRT version.

Migration to VST-VRT is easy; for step-by-step instructions see the [Windows to VST-VRT Vista Manager Migration User Guide](#).

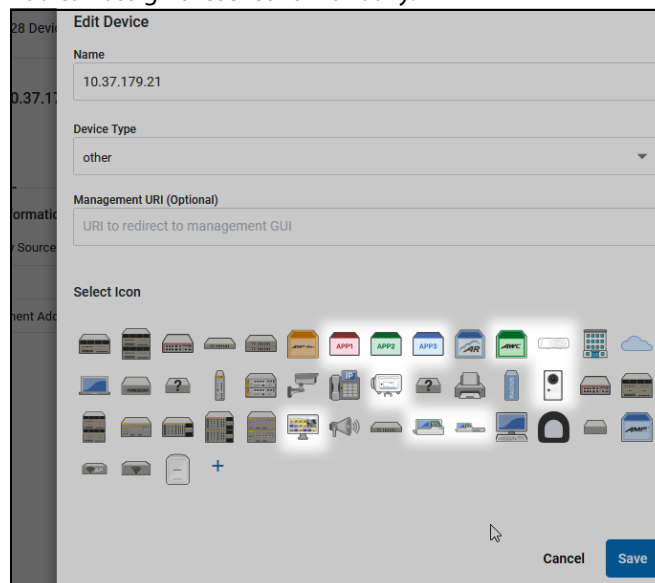
Periodic maintenance releases for version 3.16.x, along with select earlier versions, may be issued.

New device icons

Applies to all Vista Manager EX installations

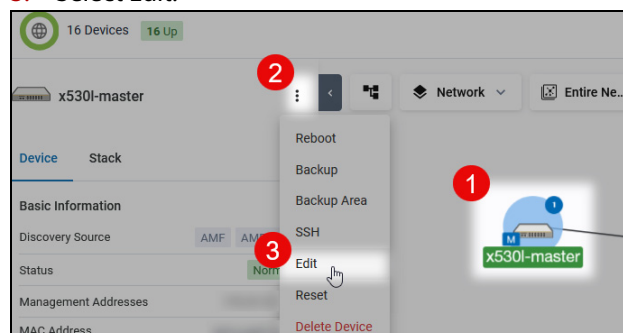
From version 3.16.0 onwards, new custom icons have been added to Vista Manager.

You can assign these icons manually.



To do this:

1. Click on the device's icon.
2. Click on the three-dot menu in the device information side panel.
3. Select Edit.

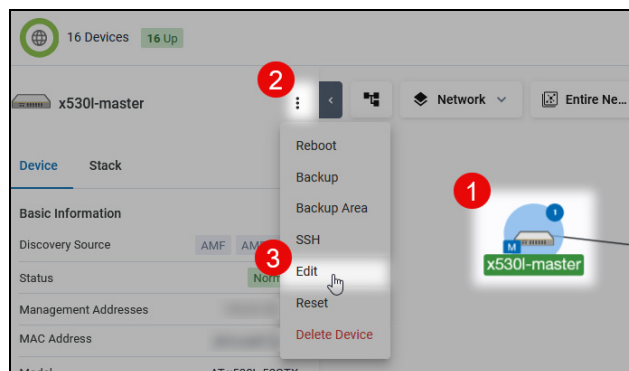


Custom Device GUI support from Network map

From version 3.16.0 onwards, Vista Manager supports access to devices with third-party GUIs. This means you can set a custom Management URI to redirect you to a device's GUI.

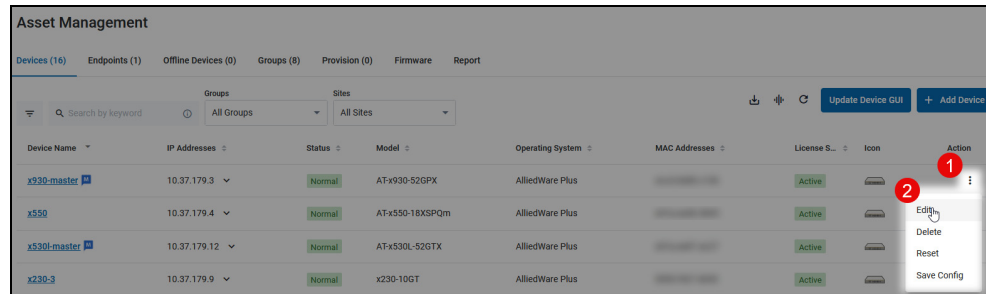
To add a Management URI from the **Network map**:

1. Click on the **device's icon**.
2. Click on the **three-dot menu** in the device information side panel
3. Select **Edit**.



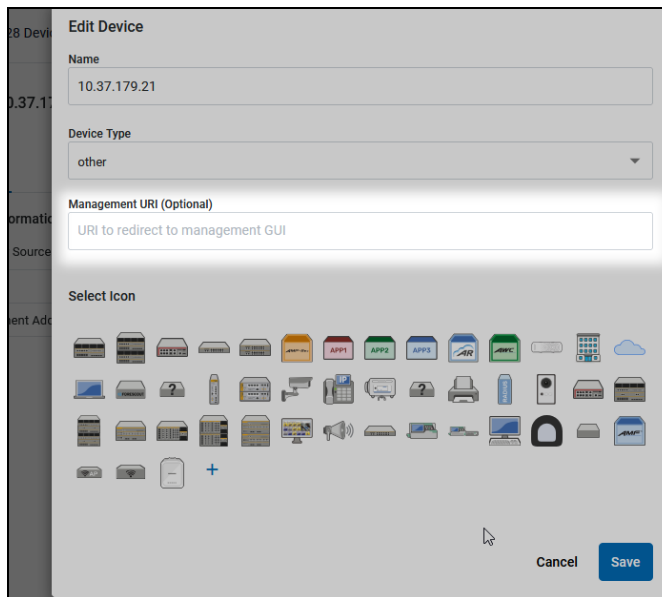
To add a Management URI from the **Asset Management page**

1. Click on the **three-dot menu** next to the device in the table.
2. Select **Edit**.



After you add a Management URI:

- You can right click on a device on the network map and select the Manage Device option to visit the GUI. This shows if this device has a supported GUI detected by Vista Manager, regardless of if it has been set up from the Edit page. We recommend you add the redirect manually in the URI field.
- In the event that your device does not have a GUI, you will be returned to the previous Edit Device window on the network map.

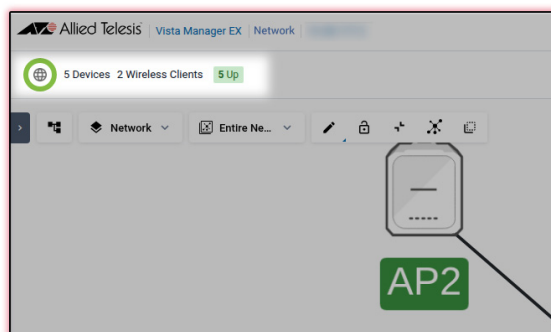
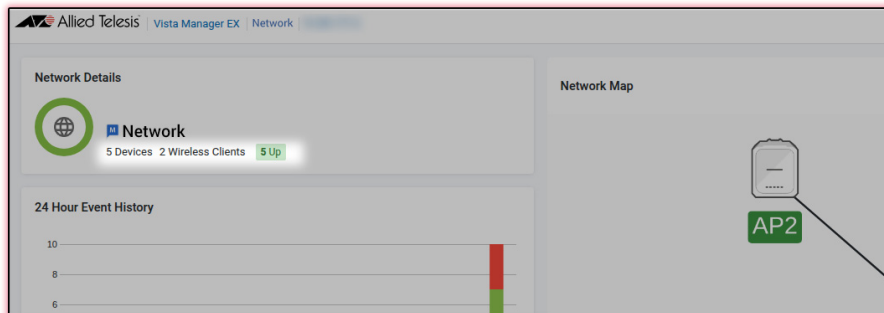


Network map client counter

From version 3.16.0 onwards, device counters display the total managed device count and count of wireless client devices separately.

You can view the total number of connected wireless clients from the Network Map screen, helping you to check the status of both wireless client devices and total managed devices quickly.

The wireless client count updates dynamically whenever the count changes in the AWC plugin.



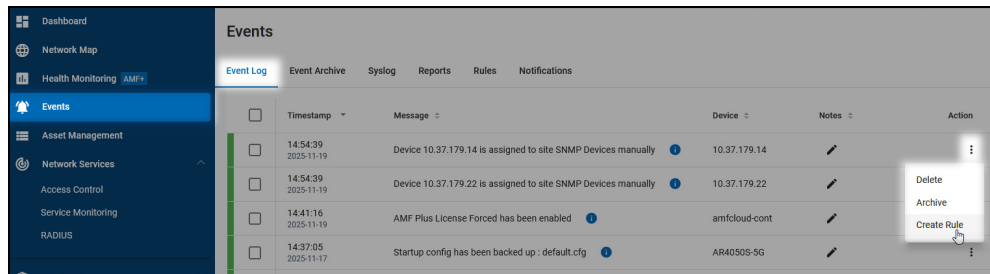
Ability to hide event logs

From version 3.16.0 onwards, you can hide unnecessary Event logs. This feature is available to Administrator users.

You can use this feature to hide any logs that you don't need to see, and automatically hide further logs that fit that rule.

To hide event logs:

1. Navigate to the **Events** tab and open the **Event Log**.
2. Click the **three-dots** next to the event you would like to hide and select **Create Rule**.
3. Enter the rule name, rule match criteria, and set the **Action** dropdown to **Hide Event Log**.
4. Click **Save**. Rules will be hidden from now on if they fit that criteria.



Create Rule

Rule Name *

Match Criteria

Title

Networks

Device

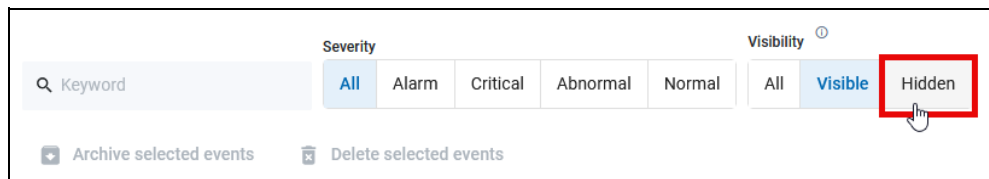
Message

Action 1

– Remove action + Add action

Cancel Save

You can see hidden log messages from the **Event Log** page by selecting the **Hidden** tab.



Note: Once a log is hidden you cannot return it to the main Event log list.

- Hidden logs are still included in the total Event log count.
- Logs generated prior to creating a rule enabling the 'Hide' feature will not be hidden.
- Using the Hide action does not prevent other actions on a rule from being triggered. For example, if you add an Email action in addition to the Hide action, you will still receive an email and that the log will be hidden.
- You can archive hidden logs.
- Hidden logs are still included in backups.

Viewing protocol traffic from all links with sFlow

From version 3.16.0 onwards, Vista Manager supports the display of protocol traffic from non-AMF links with sFlow. Previously, only AMF links were supported.

- You can manually create a link in Vista Manager to see protocol traffic from devices regardless of if they are AMF links or not.
- You will need to configure sFlow on one device at the end of the link, and set up traffic forwarding from that device to Vista Manager.

Endpoints table alarm filtering removed

From version 3.16.0 onwards, the ability to filter by alarms has been removed from the Endpoints table.

AWC enhancements

Visual improvements to AWC dialogs

From version 3.16.0 onwards, changes have been made to the MAC address input dialog, AP Profile creation dialog, and Channel Blanket Profile dialog.

- The MAC address input dialog has been updated.

Wireless AP Edit

Device Name

Management Group*
Select the item

Tag

To add a tag to the selected APs, type the tag name and press the Enter key. To remove a tag from the selected APs, click on the x next to the tag name.

Use AMF for AP Provisioning
 Disable
You must select an AMF network in the Management Group if you want to use AMF for AP Provisioning.

IP Address
DHCP STATIC

MAC Address*
eg: 00:1a:2b:3c:4d:5e
Option 43 setting is required on your DHCP server if you select DHCP.

Save Cancel

The AP Profile creation screen has also been updated. You can now filter based on AP criteria.

Select Country and Model

Country*
JP - Japan

Model*

Series: TQ Series TQ Series - SDN/OpenFlow [Clear filter](#)

IEEE / Wi-Fi: 802.11be/7 802.11ax/6 802.11ax/5 802.11n/4 Router: Available Unavailable

Number of Radios: 3 Radios 2 Radios 1 Radio Outdoor installation: Available Unavailable

IEEE 802.11ax (Wi-Fi 6 / 6E)

<input type="radio"/> AT-TQ(m)3403 802.11ax 3 Radios This is for a tri-band 802.11ax model.	<input type="radio"/> AT-TQ7403 802.11ax 3 Radios This is for a tri-band 802.11ax model.	<input type="radio"/> AT-TQ7403-R 802.11ax 3 Radios Router This is for a tri-band 802.11ax router model.
<input type="radio"/> AT-TQ(m)6403 GEN2 802.11ax 3 Radios This is for a tri-band 802.11ax model.	<input type="radio"/> AT-TQ(m)6702 GEN2 AT-TQ(m)6602 GEN2 802.11ax 2 Radios This is for a dual-band 802.11ax	<input type="radio"/> AT-TQ6x02 GEN2-R 802.11ax 2 Radios Router This is for a dual-band 802.11ax router model.

OK Cancel

The CB Profile creation screen has been updated.

Select an AP model that uses AWC-CB

AP Model *

- AT-TQ7403
Channel Blanket configurations for AT-TQ7403
- AT-TQ6403 GEN2
Channel Blanket configurations for AT-TQ6403 GEN2
- AT-TQ6702 GEN2 / AT-TQ6602 GEN2 / AT-TQ6702e GEN2
Channel Blanket configurations for AT-TQ6702 GEN2 / AT-TQ6602 GEN2 / AT-TQ6702e GEN2
- AT-TQ6602
Channel Blanket configurations for AT-TQ6602
- AT-TQ5403 / AT-TQ5403e
Channel Blanket configurations for AT-TQ5403 / AT-TQ5403e

OK Cancel

Ability to update WPA keys automatically

From version 3.16.0 onwards, you can set WPA personal keys to update automatically with the **Update WPA Personal Key** setting from the **AWC Task Scheduling** page.

To use this feature:

1. Open the AWC Task Scheduling page and click **Create**
2. The Create Task Schedule window will appear.
3. Set the Trigger to **Daily** (for a daily refresh)
4. Set the timezone and start datetime
5. Select **Update WPA Personal Key** as the Operation type
6. Select the Management group and the targeted AP Profile/Radio/VAP
7. Click **Add**

Create Task Schedule

Task Name *

Description

Trigger *

Timezone *

Start *

Type *

Enable Disable

Add Cancel

Ability to enable or disable Wi-Fi access

From version 3.16.0 onwards, you can create AWC Tasks for restricting Wi-Fi connectivity during specific time periods. When you enable time-based access control, it can contribute to energy conservation and enhance overall network security.

For example, you might want to disable Wi-Fi access from 9PM, and schedule it to be active at 6AM every day. To do this:

1. Open the AWC Task Scheduling page and click **Create**.
The Create Task Schedule window will appear.
2. Set the Trigger to **Daily** (for a daily refresh)
3. Set the timezone
4. Set the start datetime (9:00 PM)
5. Select **Disable Radio/VAP** as the Operation type
6. Select the Management group and the targeted AP Profile/Radio/VAP
7. Click **Add**.
8. Click the **Create** button again.
9. Set the Trigger to **Daily** (for a daily refresh)
10. Set the timezone
11. Set the start datetime (6:00 AM)
12. Select **Enable Radio/VAP OFF** as the Operation type
13. Select the Management group and the targeted AP Profile/Radio/VAP
14. Click **Add**.

The screenshot shows the 'Create Task Schedule' dialog box with the following fields and options:

- Task Name ***: A text input field.
- Trigger ***: Radio buttons for Once (selected), Daily, Weekly, and Monthly.
- Description**: A text area.
- Timezone ***: A dropdown menu showing '(UTC+09:00) Asia/Tokyo'.
- Start ***: A datetime field showing '2025-09-08 15:43'.
- Enable/Disable**: Radio buttons for Enable (selected) and Disable.
- Type ***: A dropdown menu with the following options: Select the item, Apply Configuration, Upgrade Firmware, Apply AWC Calculation Results, **Enable Radio/VAP** (highlighted), Disable Radio/VAP, and Update SSID/WPA Personal Key.
- Add** and **Cancel** buttons are located at the bottom right.

More options for CSV Importing

From version 3.16.0 onwards, you can assign the following settings to APs in a CSV file when importing them.

- AP Profile (String)
If the specified AP Profile includes an Emergency Status VAP, that VAP will be applied and the "Do not use Emergency Status VAP" checkbox will be left unchecked.
- Channel (integer)
- Transmit Power (integer)
- AWC Transmit Power Lower Limitation (integer)
- Stop Radio Transmission (integer)

Registration and Settings from CSV File

Select CSV File

Select a CSV file for registration. The CSV format is as follows.
Up to 350 APs can be registered in a single CSV file.

1st Column: Device Name
2nd Column: IP Address ([Detail](#))
3rd Column: MAC Address
4th Column: DHCP ([Detail](#))
5th Column: Tag Name ([Detail](#))
6th Column: AP Profile
7-9th Column: Channel (Radio 1, Radio 2, Radio 3) ([Detail](#))
10-12th Column: Tx Power (Radio 1, Radio 2, Radio 3) ([Detail](#))
13-15th Column: AWC Tx Power Lower Limitation (Radio 1, Radio 2, Radio 3) ([Detail](#))
16-18th Column: Stop Radio Transmission (Radio 1, Radio 2, Radio 3) ([Detail](#))

Management Group

Use AMF for AP Provisioning

Disable
You must select an AMF network in the Management Group if you want to use AMF for AP Provisioning.

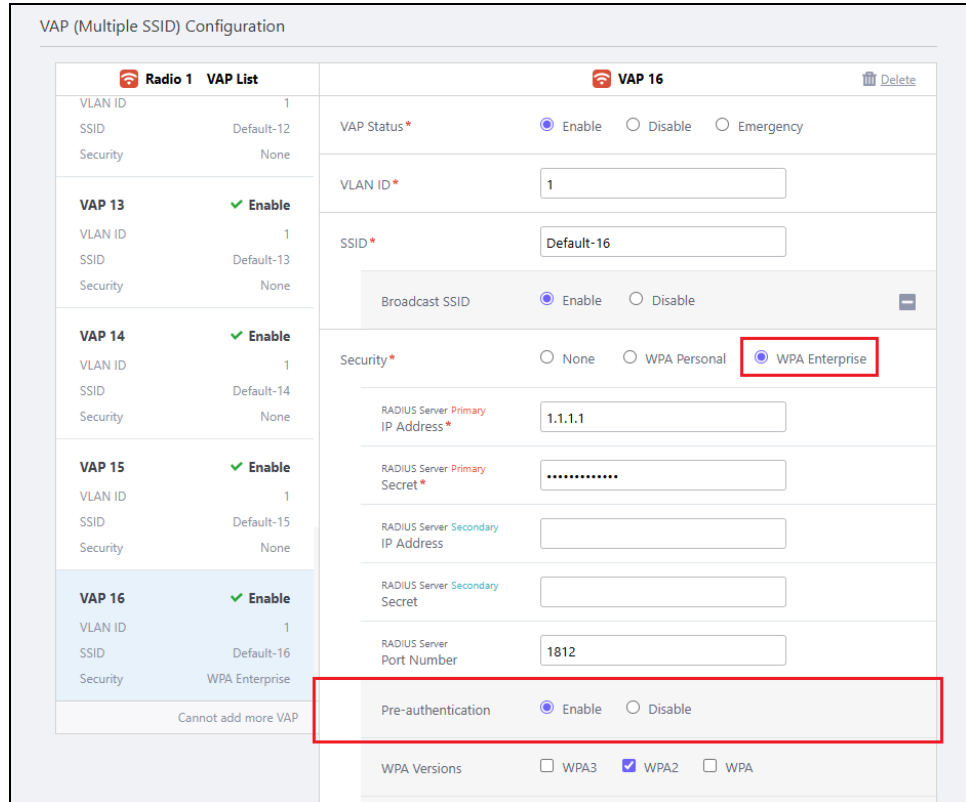
CSV Format

Device Name	192.168.1.100	12:34:56:78:90:ab	0	Tag1,Tag2	AP Profile	1	36	5	0	3	5	10	0	0	0
-------------	---------------	-------------------	---	-----------	------------	---	----	---	---	---	---	----	---	---	---

- Specify a value between 0 and 5.
(0: Auto, 1: Min, 2: Low, 3: Middle, 4: High, 5: Max)
- The value of the "AP Profile" is required.

Ability to enable Pre-authentication under WPA Enterprise

From version 3.16.0 onwards, you can enable Pre-authentication from the AP Profile settings when using WPA Enterprise.



Restriction to 20MHz bandwidth removed

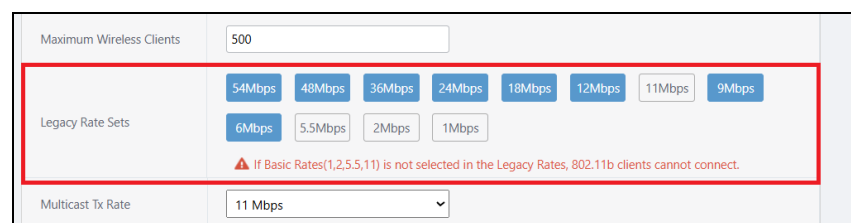
From version 3.16.0 onwards, the restriction on legacy rates have been removed.

This means you can select the bandwidth of 20MHz without selecting a legacy rate (such as 1Mbps, 2Mbps, or 11Mbps).

If you select 20MHz as bandwidth and any one of 1Mbps, 2Mbps, 5.5Mbps, or 11Mbps is not selected, a warning displays.

If you uncheck all items, the following error message will appear:

- At least one Supported and Basic Rate must be selected.



Increase in number of supported wireless clients

From version 3.16.0 onwards, the AWC Plugin supports 24000 wireless clients.

Differential Update

From version 3.16.0 onwards, you can use the Differential update method.

If you select Differential Update, Vista Manager will only update the data that has changed since the previous update.

This feature may help reduce the load on Vista Manager and improve the display of access points and wireless clients on the Network Map and Asset Management pages.

The screenshot shows the 'Network Map Setting' configuration window. It includes a 'Save' button in the top right corner. Under the heading 'Wireless Device Topology Data Update-Interval', there are radio buttons for 'Don't Set' and 'Set', with a text input field containing '1' and the unit 'min'. Under the heading 'Target Data', there are radio buttons for 'AP and Associated Client' and 'Only AP'. The 'Update Method' section, highlighted with a red box, contains radio buttons for 'Full Update' and 'Differential Update'.

What's New in Vista Manager EX v3.16.3

Introduction

This release note describes the new features in Vista Manager EX™ v3.16.3. It covers changes to Vista Manager EX plus the optional Autonomous Wave Controller (AWC) plugin.

Further information is included for other supported plugins, and AMF Plus supported menu items, highlighted with a badge in the Vista Manager EX UI.

You can obtain the software files from the [Software Download area of the Allied Telesis website](#). Log in using your assigned email address and password.

Contact your authorized Allied Telesis support center to obtain licenses.

Caution: Information in this release note is subject to change without notice and does not represent a commitment on the part of Allied Telesis, Inc.



While every effort has been made to ensure that the information contained within this document and the features and changes described are accurate, Allied Telesis, Inc. can not accept any type of liability for errors in, or omissions arising from, the use of this information.

New Features and Enhancements

This section summarizes the new features and enhancements added to Vista Manager EX version 3.16.3.

It includes:

- [“Scheduled reboot issues fixed” on page 16.](#)
- [“Icons of SNMP devices cannot be customized” on page 17.](#)
- [“Special characters would truncate Event Log messages” on page 17.](#)
- [“Internal upgrade for Vista Manager” on page 17.](#)

Scheduled reboot issues fixed

Applies to all Vista Manager EX installations

From version 3.16.3 onwards, the following issues regarding scheduled reboots have been fixed:

- If a reboot task is already scheduled for one product family, you can now correctly schedule a reboot for another family.
- The status text correctly updates to rebooting during a reboot.
- After the scheduled reboot task finishes, it displays the correct reboot task message.

Icons of SNMP devices cannot be customized

Applies to all Vista Manager EX installations

From version 3.16.3 onwards, the icons of devices detected by the SNMP plugin cannot be customized.

- Previously, users could modify plugin discovered device nodes that did not have MAC address or UUID information. This functionality has been disabled.
- The Edit option is hidden for any plugin discovered device nodes that do not have a MAC address or UUID from the Network map, or the Asset Management pages.

Special characters would truncate Event Log messages

Applies to all Vista Manager EX installations

From version 3.16.3 onwards, special characters no longer truncate Event Log messages.

When a plugin would send event log messages to Vista Manager with an information field that included Japanese characters, upper case English characters, and special characters, it was possible for the message field in the Event Log to be truncated. This has been fixed.

Internal upgrade for Vista Manager

Applies to all Vista Manager EX installations

From version 3.16.3 onwards, Vista Manager's internal software has been updated to improve security, and overall system reliability.

What's New in Vista Manager EX v3.16.4

Introduction

This release note describes the issues resolved in Vista Manager EX™ v3.16.4.

You can obtain the software files from the [Software Download area of the Allied Telesis website](#). Log in using your assigned email address and password.

Contact your authorized Allied Telesis support center to obtain licenses.

Caution: Information in this release note is subject to change without notice and does not represent a commitment on the part of Allied Telesis, Inc.



While every effort has been made to ensure that the information contained within this document and the features and changes described are accurate, Allied Telesis, Inc. can not accept any type of liability for errors in, or omissions arising from, the use of this information.

Issues Resolved

The following issues have been resolved in Vista Manager EX version 3.16.4:

ISSUE NUMBER	DESCRIPTION
CR-89625	Previously, in Asset Management notifications, additional entries beyond the first could sometimes not be registered. When attempting to register a second notification, a message appeared stating "The notification could not be added", and the registration failed. This issue has been resolved.
CR-89509	Previously, if a user: (1) moved a collapsed site or VCStack of devices, and then (2) locked the network map, and then (3) expanded the collapsed site or stack, then the child nodes within the site or stack would appear in their previous location instead of in the location they had been moved to. This issue has been resolved.
CR-89507	Previously, the "Rules" under the Events menu would fail to load and would get stuck on a "Loading data..." page. This issue has been resolved.
CR-89367	Previously, if a user removed a switch from a VCStack and then added it back to the stack, and the stack was included in a custom map, that map did not always display the stack member. This issue has been resolved.
CR-89138	Previously, if you exported asset management data, the status values in the CSV file were set incorrectly. This issue has been resolved.

ISSUE NUMBER	DESCRIPTION
CR-89119	Previously, emails sent from health monitor rules could miss devices that were solely managed by the SNMP plugin. This issue has been resolved, and such devices are now included in the emails.
CR-89022	Previously, the network map could take a long time to load when a customer had a large number of sites or stacks of devices. This issue has been resolved.

Important Considerations Before Upgrading

This section describes changes that may affect Vista Manager EX or your network's behavior if you upgrade. Please read it carefully before upgrading.

Manual polling recommended if upgrading

Applies to all Vista Manager EX installations

From version 3.11.0 onwards, we recommend that you poll the network manually after upgrading Vista Manager EX.

This makes sure that Vista Manager EX acquires functionality that has been added in the new release, including functionality that depends on information from devices. Otherwise, features may fail to detect devices and will not work as intended.

To poll manually, use the **Refresh Topology** button on the Network Map:



Traffic map data not restored

When you upgrade Vista Manager EX, traffic map data from earlier versions will not be imported.

Upgrading versions earlier than 3.9.0

If you create a backup on a version earlier than 3.9.0, and you want to upgrade to a new version, you must first install your backup on version 3.9.0 and export the backup again. Then you can upload the new backup to a later version of Vista Manager (such as v3.14.0).

If you upgrade directly to 3.14.0 instead (for example, from 3.7.0 to 3.14.0 without upgrading to 3.9.0 first), you may encounter data corruption or incompatibility issues.

Alternatively, you can choose to perform a fresh install of the newer version and configure it from new.

Health Monitoring sensor widgets are empty after upgrading from 3.13.x

After upgrading from 3.13.x, sensor gauge widgets will be empty on the Health Monitoring page's flexible dashboard. If you have created any latest or historical temperature widgets for specific devices, you need to re-create these widgets again after upgrading.

Internet Explorer 11 compatibility

When using the Vista Manager EX integrated map with Internet Explorer 11, you may find performance to be slower, particularly with large maps. Therefore, we recommend using a different browser, especially if you have a large network.

Virtualization support

The Vista Manager EX virtual appliance is not supported on VMware vSphere Hypervisor (ESXi) 5.5. Please upgrade to VMware vSphere Hypervisor (ESXi) 6.0, 6.5, 6.7, 7, or 8 if you wish to use this version of Vista Manager EX.

Vista Manager plugins

Do **not** delete a plugin from Vista Manager during a version upgrade. No de-registering or re-registering of plugins is required during this stage.

Fibre monitoring feature permissions

Note that on a **new** installation of Vista Manager EX, you will need to enable **Active Fibre Monitoring** permissions for users. This can be done on the **User Management** page.

Disabling Internet Breakout disables all PBR rules

Internet Breakout uses policy-based routing (PBR) rules. When you use Vista Manager EX to disable Internet Breakout, it disables all PBR rules, including:

- rules created by SDWAN, and
- rules created by Internet Breakout, and
- rules created manually through the CLI.

Obtaining User Documentation

Vista Manager documentation

Installation Guides, User Guides and Release Notes for Vista Manager EX are available on our [website, alliedtelesis.com](http://www.alliedtelesis.com).

AMF Plus documentation

For full AlliedWare Plus documentation, see our online documentation library. For AMF Plus, the library includes the following documents:

- the [AMF Plus Feature Overview and Configuration Guide](#)
- the [AMF Plus Datasheet](#)
- the [AMF Plus Cloud Installation Guide](#).

Upgrading Vista Manager as a Windows-based installation

Windows-based Vista Manager has two optional plug-ins. These can be upgraded at the same time as Vista Manager EX.

Obtain the executable files

1. Download Vista Manager EX from the [Allied Telesis Support Portal](#). If you are going to install the AWC and/or SNMP plug-ins then download these files from the same location.
 - The Vista Manager EX installation executable is named 'atvmexXXXbXXw.exe', with the Xs denoting the version and build numbers.
 - The AWC plug-in is called 'atawcXXXbXXw.exe'.
 - The SNMP plug-in is called 'atsnmpXXXbXXw.exe'.

Do not rename these files. The installation requires them to be in this format.

2. Put the executables for Vista Manager and any plug-ins you wish to install in a single folder. This folder must be accessible from the machine you wish to install Vista Manager on.

Backup Vista Manager EX and the plug-ins

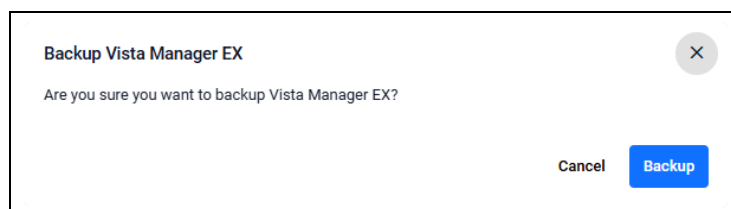
Caution Your serial number and license information are part of your database backup. If you upload the backup file when upgrading, you will keep the same serial number, and your licensing will continue to work without interruption.

However, if you configure a new instance of Vista Manager EX, without uploading your backup, a new serial number will be generated, and your existing licensing will no longer work. You will need to contact Allied Telesis support to generate a new license.

Therefore, it is **STRONGLY** recommended that you upload your database backup to ensure your licensing keeps working.

Backup Vista Manager EX

1. Log in to Vista Manager and select the **System Management** page.
2. In the **Database Management** page, click on the **Backup** button next to the Backup tab.
3. Click **Backup** again to confirm you wish to make a backup.



This automatically downloads a **tar** file backup to your default download location.

Backup the SNMP plug-in

4. If you have the SNMP plug-in installed, log on locally to the **Vista Manager EX Server** on your Windows device.

5. **Stop** the SNMP server services using the shortcut or by running the following command line:

```
"<Vista Install Path>\Plugins\AT-SNMP\NetManager\bin\svrstop
```

6. Run the backup utility by using the shortcut or by running the following command line.

```
"<Vista Install Path>\Plugins\AT-SNMP\NetManager\bin\SMBBackup.exe"
```

Follow the instructions on the screen.

Backup the AWC plug-in

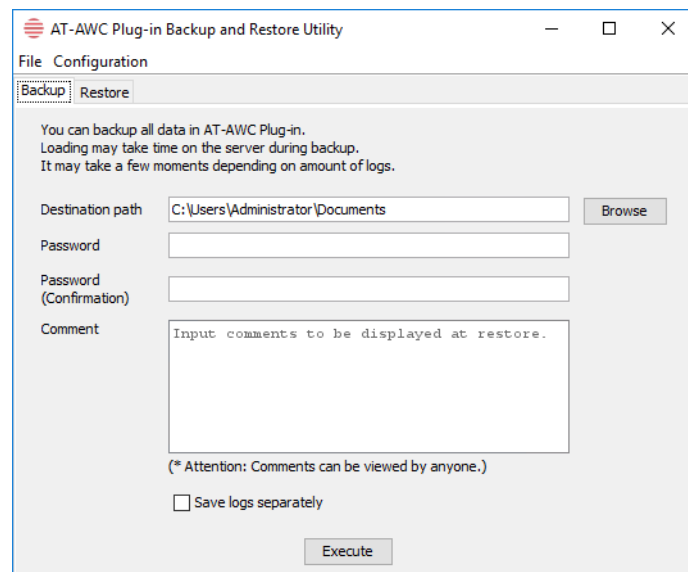
7. If you have the AWC plug-in installed then log on locally to the Vista Manager EX server.

8. Stop the AWC server services using the shortcut or by running the following command line.

```
"<Vista Install Path>\Plugins\AT-AWC\root\stopserver.bat"
```

9. Run the backup/restore utility by using the shortcut or running the following command line.

```
"<Vista Install Path>\Plugins\AT-AWC\tools\maintenance\maintenance.bat"
```



10. Select the backup tab and follow the instructions on the screen.

Note: The default location of <Vista Install Path> is **C:\Program Files (x86)\Allied Telesis\AT-Vista Manager EX**

Uninstall the existing version

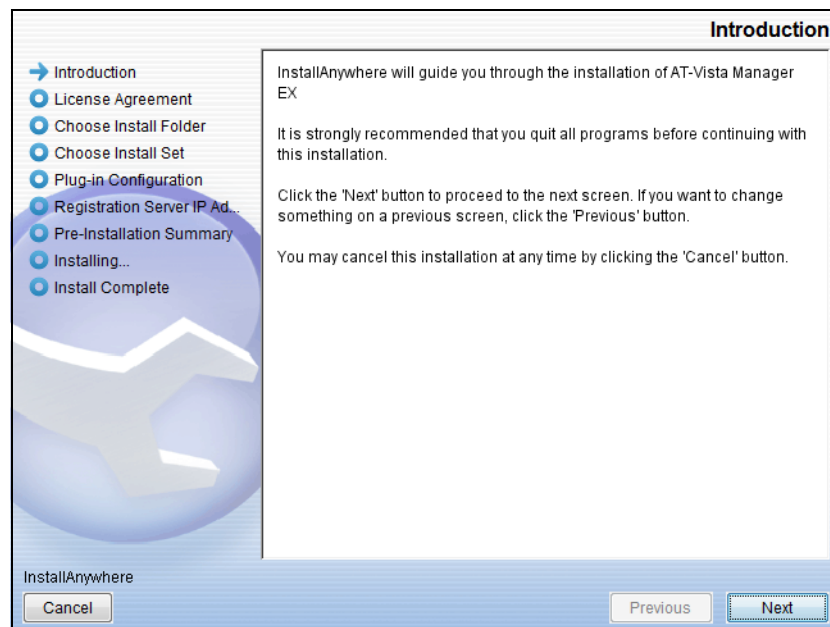
1. Log on to your Windows device as the same user as when installing.
2. Stop the server. Select **AT-Vista Manager EX** and then **AT-Vista Manager EX - Stop Server** from the Windows menu.
3. From the Windows menu, select **AT-Vista Manager EX** then **AT-Vista Manager EX - Uninstall**.
4. The AT-Vista Manager EX uninstaller starts.
5. Click the **Uninstall** button to uninstall.
6. If a dialogue box prompting you to restart the system is displayed, select **Restart the system** or **Restart later** and click the **Finish** button.
7. Delete the installation folder. The default installation folder is:
C: \ Program Files (x86) \ Allied Telesis \ AT-Vista Manager EX
8. Reboot the system.

Install the new version

1. From your Windows device, execute the Vista Manager EX installation program 'atvmexXXXbXXw.exe'.

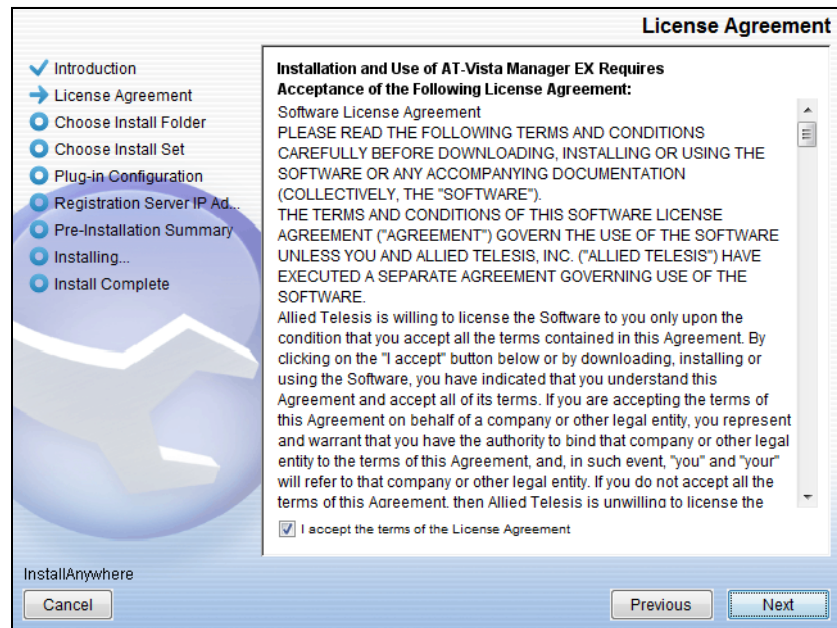
Note: You must have administrator privileges to run the installer.

2. The **Introduction** dialog displays:



This wizard will guide you through the installation of the latest version of Vista Manager EX. Click **Next**.

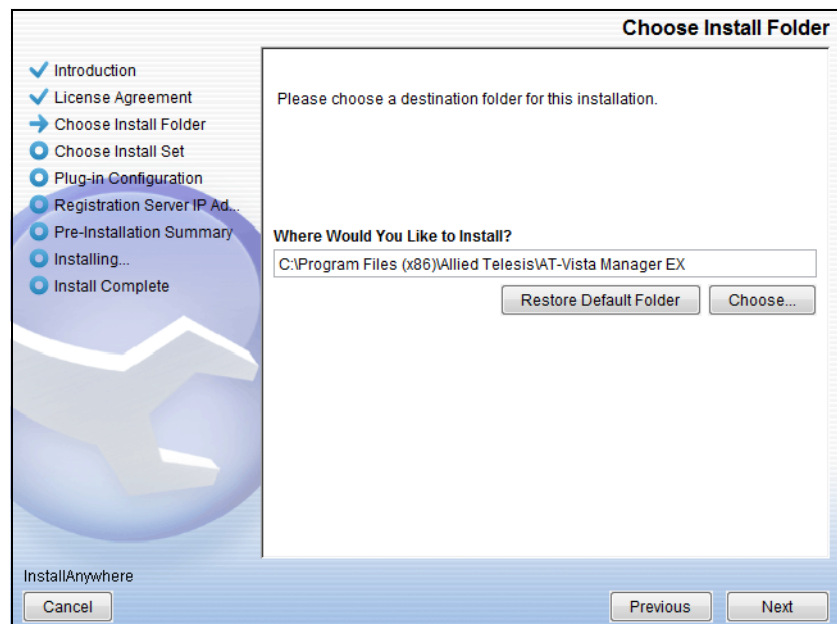
3. The **License Agreement** dialog displays:



Read the software license agreement terms and conditions. If you agree to accept the terms of the license agreement:

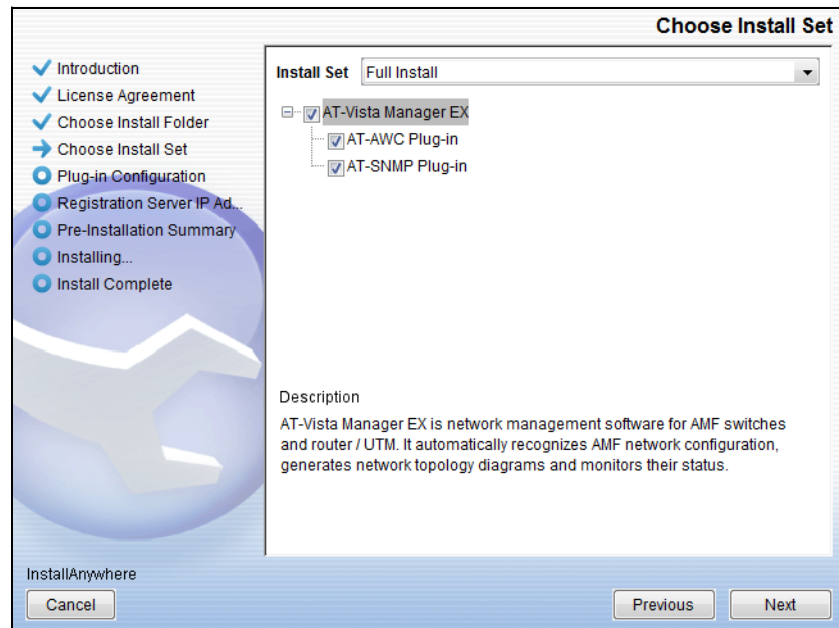
- Click **I accept the terms of the License Agreement**
- Click **Next**

4. The **Choose Install Folder** dialog displays:



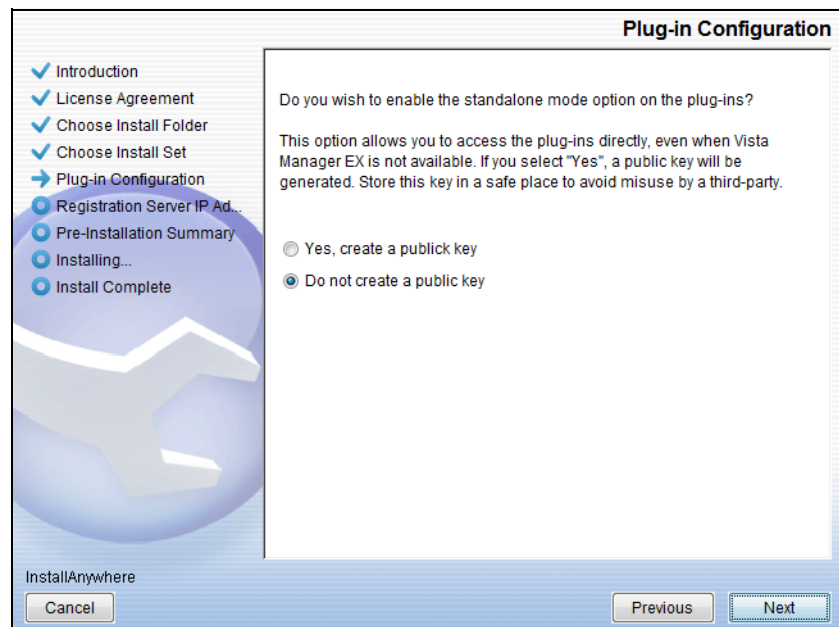
Select a destination location and click **Next**.

5. The **Choose Install Set** dialog displays:



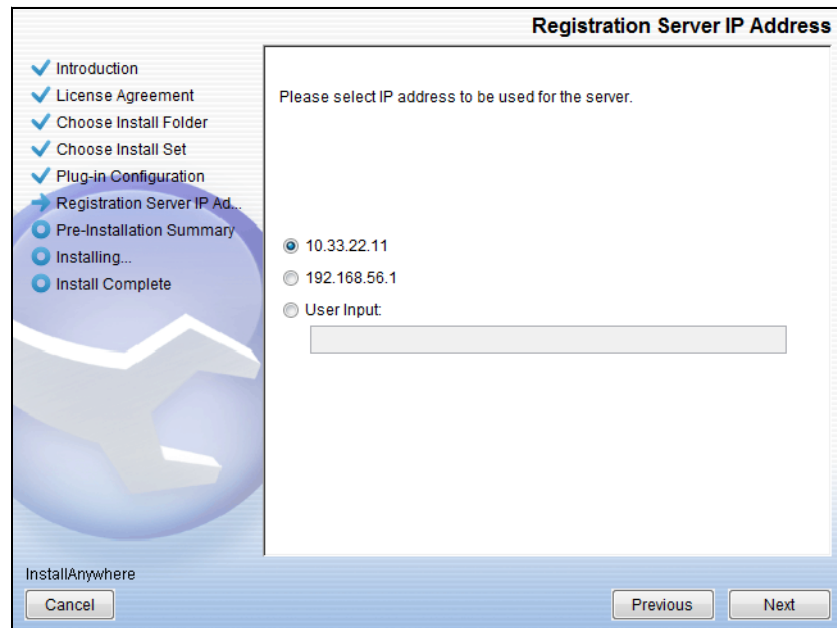
Select **Full Install** from the drop down list. By default all plug-ins are selected. Clear the check box for any plug-ins you do not wish to install. Click **Next**.

6. The **Plug-In Configuration** dialog displays:



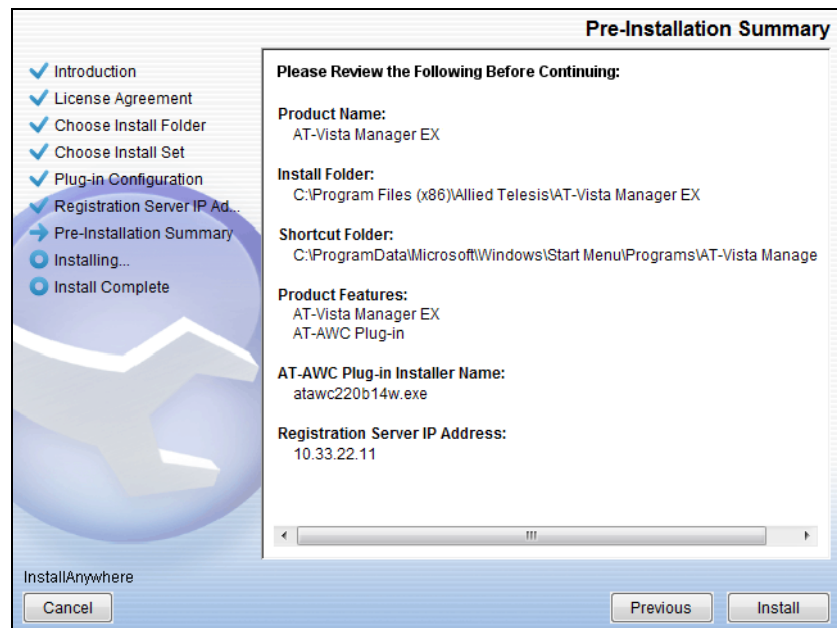
Select **Do not create a public key** unless you are intending to use the plug-ins in standalone mode. For more information on standalone mode, refer to the Installation Guide. Click **Next**.

7. The **Registration Server IP Address** dialog displays:



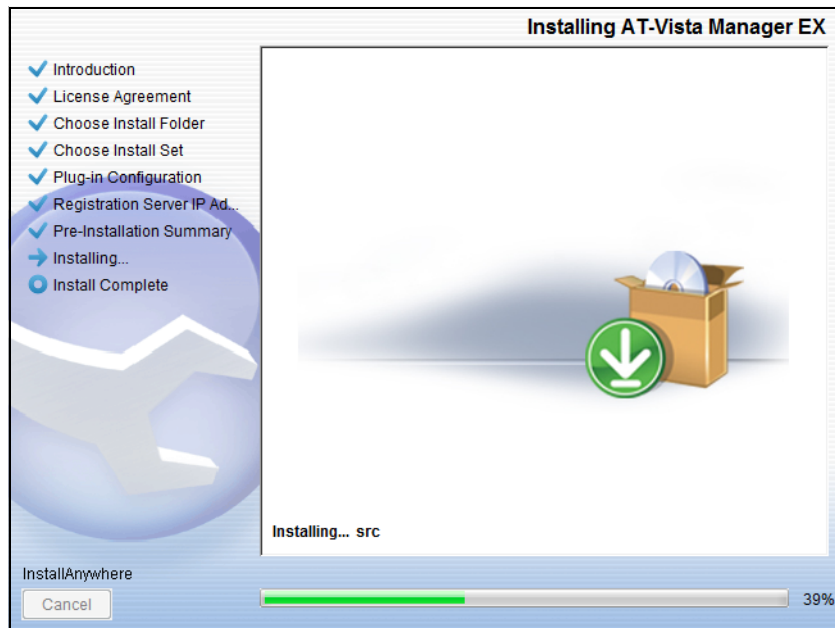
Either select from the list of IP addresses already configured on the Windows machine, or input a valid IP address. Click **Next**.

8. The **Pre-Installation Summary** dialog displays:

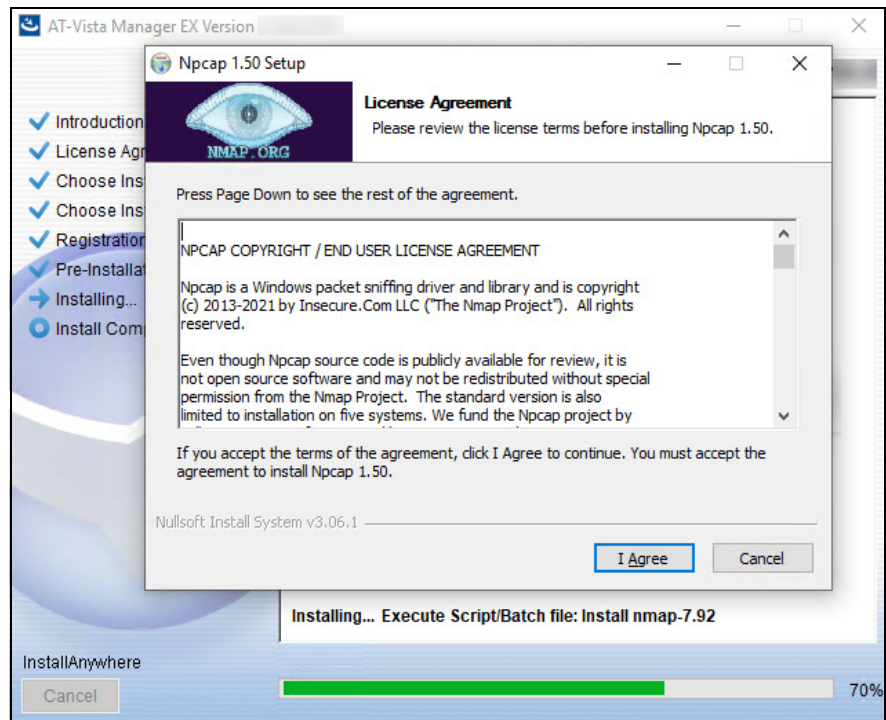


Check that your Product Name, Install Folder, Shortcut Folder, Product Features, Plug-in Installer Name and Registration IP Address are correct, and then click **Install**.

9. The **Installing...** dialog displays:

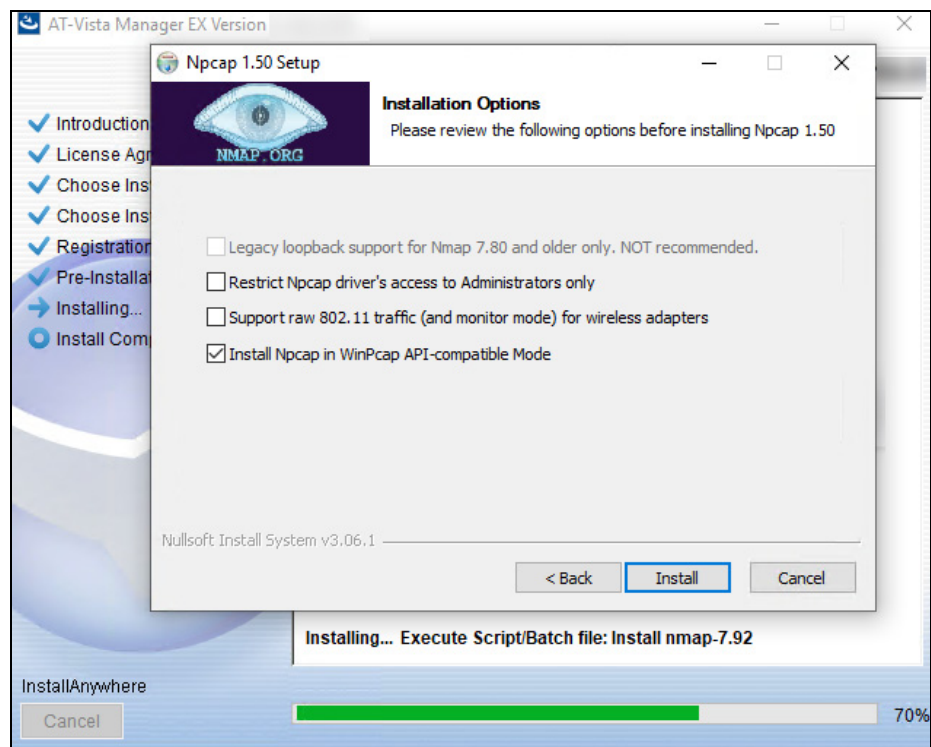


10. The NPCAP installer dialog appears.

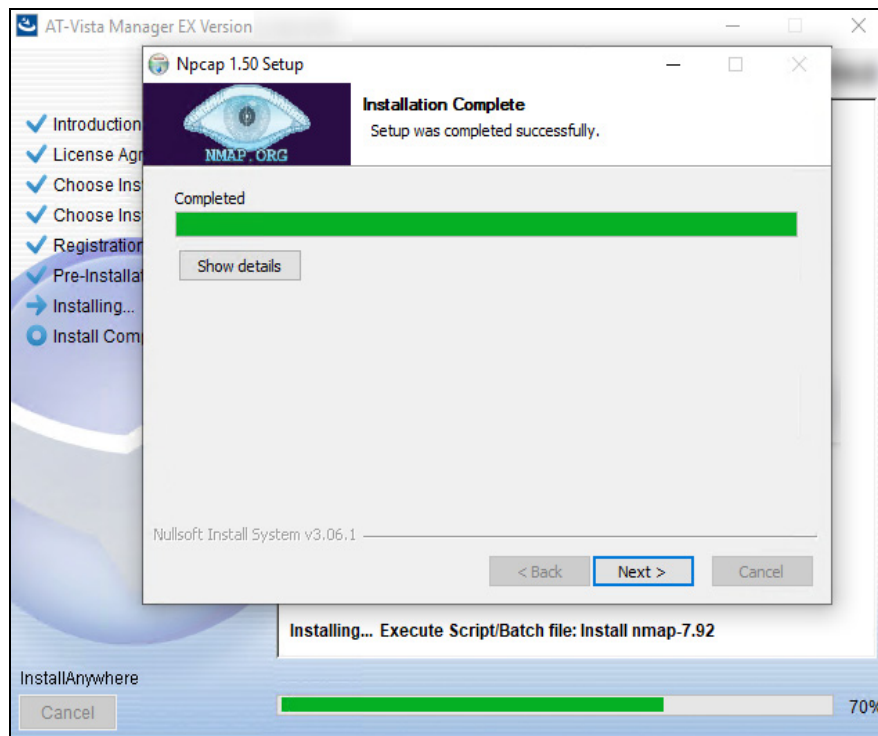


Click **I Agree** to proceed with the install.

11. Click **Install**.

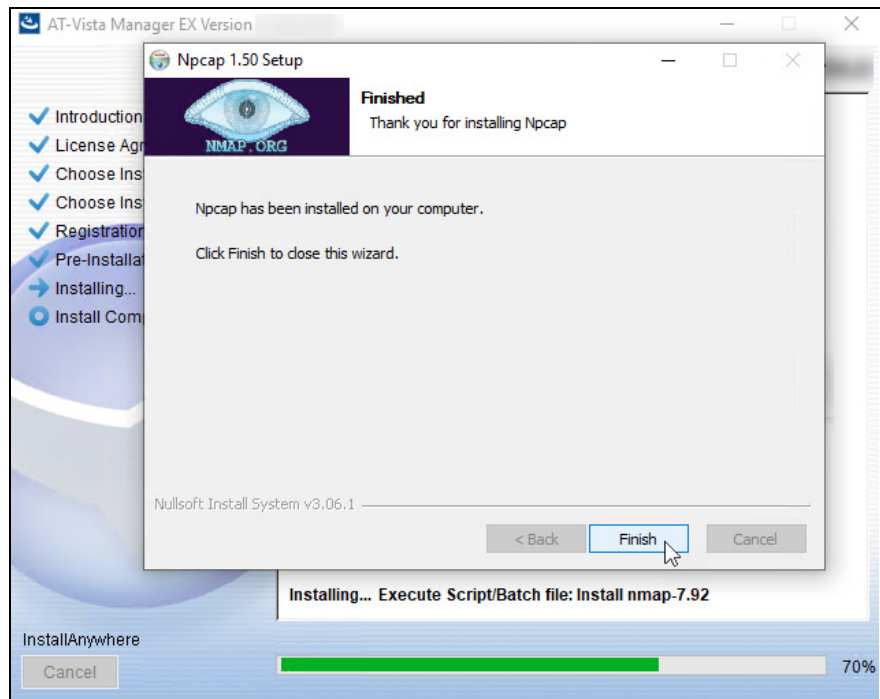


12. The Npcap install will install.



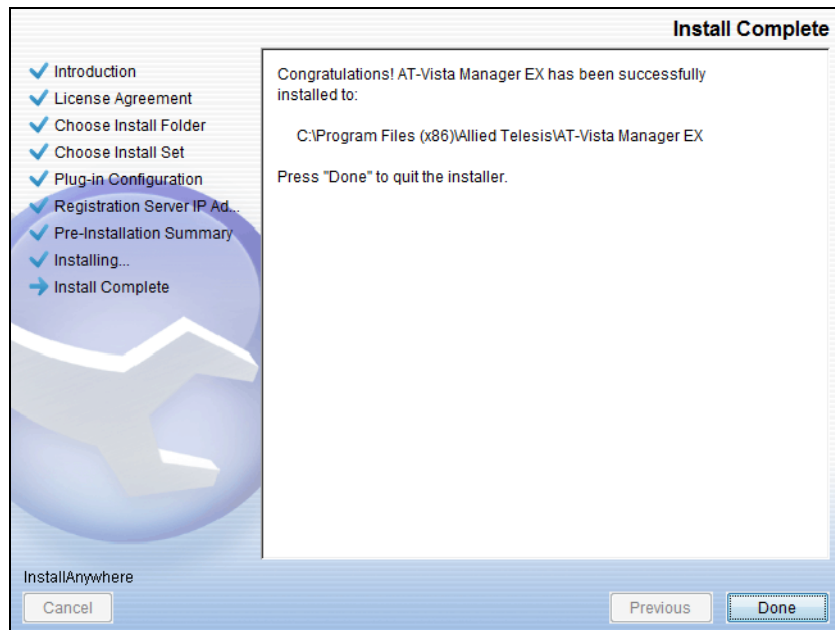
Click **Next**.

13. Click **Finish** to close the Npcap installer.



Vista Manager will resume the rest of the download.

14. Once the installation is complete you will see the **Install Complete** dialog:

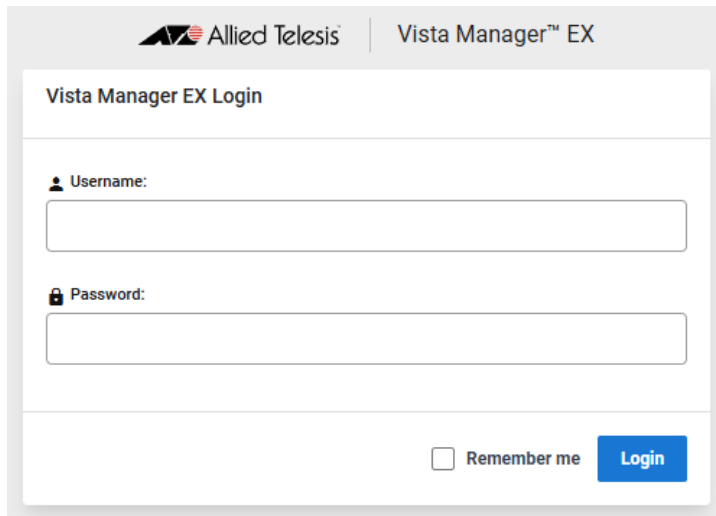


Check that the installation has completed successfully and click **Done**.

Restore the Vista Manager database

After the upgrade is complete, you need to restore the Vista Manager database. To do this, use the following procedure.

1. Login to Vista Manager.



Vista Manager EX Login

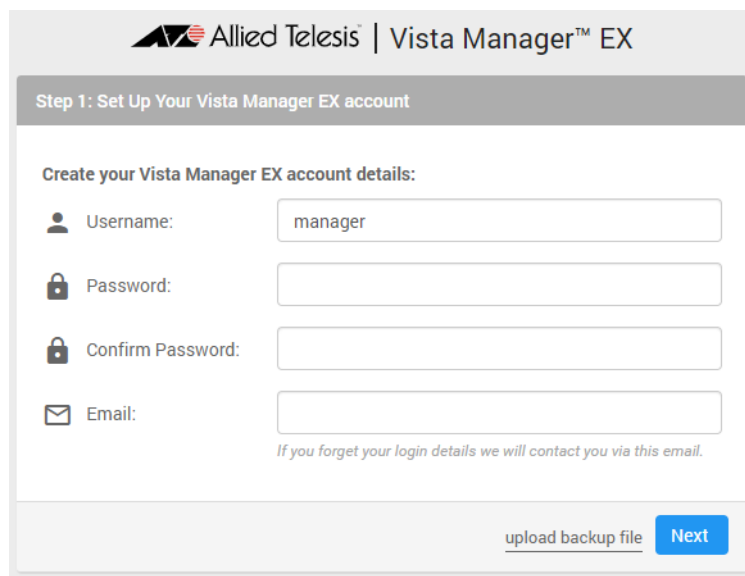
Username:

Password:

Remember me [Login](#)

Enter the **Username** manager and the **Password** friend. Click Login.

2. Click on upload backup file.



Step 1: Set Up Your Vista Manager EX account

Create your Vista Manager EX account details:

Username: manager

Password:

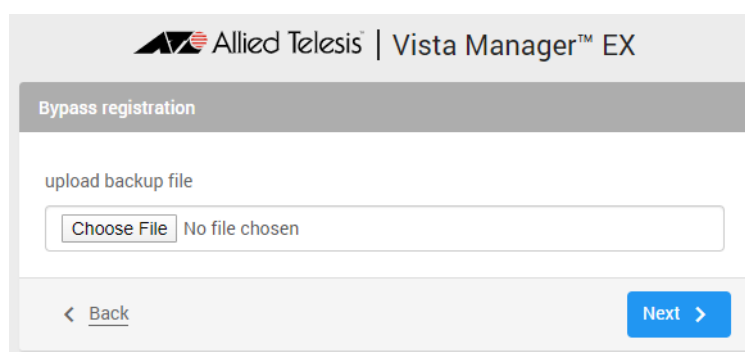
Confirm Password:

Email:

If you forget your login details we will contact you via this email.

[upload backup file](#) [Next](#)

3. Select the database backup to upload. Click on Choose File, and browse to your Vista Manager database backup. Click Next. The Vista Manager database will be restored.



Bypass registration

upload backup file

[Choose File](#) No file chosen

[< Back](#) [Next >](#)

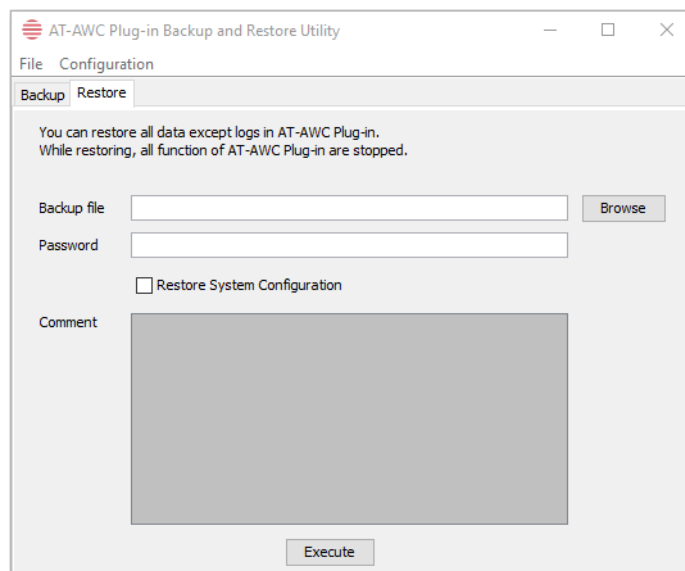
Restore the SNMP plug-in

4. If you have the SNMP plug-in installed then log on locally to the Vista Manager EX server.
5. Stop the SNMP server services using the shortcut or by running the following command line.
"<Vista Install Path>\Plugins\AT-SNMP\NetManager\bin\svrcmd.bat" svrstop
6. Run the restore utility by using the shortcut or by running the following command line.
"<Vista Install Path>\Plugins\AT-SNMP\NetManager\bin\SMRestore.exe"
Follow the instructions on the screen.

Restore the AWC plug-in

7. If you have the AWC plug-in installed then log on locally to the Vista Manager EX server.
8. Stop the AWC server services using the shortcut or by running the following command line.
"<Vista Install Path>\Plugins\AT-AWC\root\stopserver.bat"
9. Run the backup/restore utility by using the shortcut or running the following command line.
"<Vista Install Path>\Plugins\AT-AWC\tools\maintenance\maintenance.bat"
10. Select the restore tab on the dialog and follow the instructions on the screen.

Note: By default, restoring the AWC database will not restore the system configuration. You can restore the system configuration by checking the Restore System Configuration checkbox in the backup/restore utility.



We recommend that you check the Restore System Configuration checkbox, as it will allow you to restore the following system configuration settings:

- Database Settings
 - « Maximum Memory Usage
- Data Retention Period Settings
 - « Associated Client History

-
- « Client Location Estimation History
 - « IDS Report History
 - Network Map Settings
 - « Wireless Client Update-Interval
 - Client Location Estimation History data

The system configuration contains settings that are tailored to the machine that created the backup. If you are restoring the backup on a different machine, particularly if that machine has a lower specification, it is recommended not to restore the system configuration.

Note: The default location of <Vista Install Path> is **C:\Program Files (x86)\Allied Telesis\AT-Vista Manager EX**

Upgrading Vista Manager on VST-APL

See the [Vista Manager Network Appliance \(VST-APL\) Release Note](#).

Upgrading Vista Manager on VST-VRT

See the [Vista Manager Virtual \(VST-VRT\) Release Note](#).

Troubleshooting

See the Troubleshooting chapter in the [Vista Manager EX User Guide](#).